

RARE COIN MONTHLY

FEBRUARY
2024

COAST TO COAST COINS *and Currency*

9365 Gerwig Lane • Columbia, MD 21046-1524

\$2.00
per issue

Fresh F.U.N. Finds Handpicked from Florida

The numismatic year kicks off with the gigantic Florida United Numismatists convention, held in Orlando, FL. It is one of the most heavily attended and exciting coin shows of the year and always provides us with a bevy of new material. This issue of Rare Coin Monthly is loaded with desirable collector coins and notes from a lot of sources, but predominately from the just concluded FUN convention.



1859 Seated Liberty Dollar

PCGS. PR-66

Incredible quality with deep mirroring and nearly flawless surfaces that shine through stunning gold, rose and blue toning. 800 minted but only 400 to 450 were actually distributed to collectors.

Only \$32,500.00 #250048



1795 Bust Half Dime

PCGS. MS-64+

A wonderful Flowing Hair Half Dime with satiny luster over essentially mark-free surfaces. The strike is sharp with every strand of Liberty's hair being fully rendered. The original surfaces are choice and lightly toned in shades of lilac-gray and gold. Fantastic quality!

Only \$35,000.00 #250049

**Item Code # is located next to price.*



Visa, MasterCard, Discover and American Express accepted

OFFICE HOURS

9 a.m. - 5 p.m. (Eastern Time Zone)
Monday thru Friday
Local Phone - 410-309-1622

TERMS OF SALE

All coins, Artifacts, and Paper money we sell are unconditionally guaranteed Genuine.

We allow you a full 14 day return privilege from the day you receive your order except for bullion orders which may not be returned for a refund. We will repurchase bullion items at our current buy prices.

Any single coin removed from its holder will be considered sold.

All prices are subject to change. We are not responsible for typographical errors.

Please add \$5.00 postage and handling on all orders under \$500.

Free shipping on orders of \$500 or more. Non-domestic orders may require additional postage.

Bank Drafts, Money Orders, Personal Checks, VISA, MasterCard, Discover or American Express may be used for payment.

Confirmations must be postmarked within 48 hours or order may be declined at our discretion.

Credit card orders will be shipped to the card's billing address only.

Maryland residents please add 6% sales tax to all orders under \$1,000.00.

Layaway is available on orders of \$500.00 or more at 1/3 down, balance paid in 90 days. A 10% restocking fee will be charged to layaways cancelled or unpaid after 90 days. The balance will be refunded promptly. No changes can be made to these orders. We reserve the right to limit this privilege at any time, at our discretion. Gold and Bullion related items may not be put in layaway.

All transactions governed by the laws of the state of Maryland, and originate in that state.

THIRD PARTY GRADED COINS & CURRENCY

The coin market is speculative and unregulated. Many areas of numismatics lend themselves to third party grading and authentication. Such certification does not eliminate all risks associated with the grading of coins and currency. Grading is a subjective matter and opinions as to the grade of a certified or uncertified item can differ. Items graded by the various services carry the guarantees, if any, of that particular service. Securing performance on any such guarantee is strictly between the purchaser and the particular grading service. Coast to Coast may or may not agree with the grade assigned by the particular grading service. Buyer should be aware that grading standards of coins have changed from time to time in the past and may do so again in the future.

NO OTHER REPRESENTATION, WARRANTY OR GUARANTEE IS GIVEN EITHER EXPRESSED OR IMPLIED.



Certified Acceptance Corp. (CAC) ... is an independent third party that awards their approval to coins that they feel are superior for their grade - the best of the best! We are proud to be CAC members and carry quite a few coins that have their stamp of approval.

Free Shipping on orders of \$500 or more.

GRADING OF 'RAW' COINS & CURRENCY

Coins: Our grading is based on Photograde and our interpretation of industry standards.

Paper Money: Our grading uses the industry standard as described in Robert Friedberg's, Paper Money of the United States.

E-mail us at
info@coastcoin.com
Visit our website at
www.coastcoin.com

Do You Have Coins or Currency For Sale?

We are always in need of almost all types of U.S. coins and currency. As you can see from our catalogs, we offer a diverse line of material so we can pay you a fair price for everything rather than just cherry picking the cream of your holdings. Call us at 1-800-638-8869 and talk to one of our buyers. We can set up an appointment for you to visit our Maryland offices, discuss shipping your holdings for a fast check, or, if the size of your collection is large enough, we'll travel to you!



Certified Coin Storage

Official Boxes • Each Hold 20 Slabs
PCGS - \$7.99 #124926 • NGC - \$15.95 #124927

— Bust Dollars —



Bust Dollars were made from 1794 to 1804 and include sub-types as follows: • Flowing Hair (1794-1795) • Draped Bust, Small Eagle Reverse (1795-1798) • Draped Bust, Heraldic Eagle Reverse (1798-1804). Here's our current selection of these beautiful and popular coins.

1795. PCGS. VF-20. Flowing Hair. 2 Leaves. BB-21.
A lovely example of the first silver dollar 'type'.
Clean looking surfaces exhibit solid detail, an even
strike, and steel-gray shading. #248020 **\$8995.00**

1795. PCGS. VF-20. Draped Bust, Centered Bust.
Strong detail with choice light silver-gray surfaces.
. #222462 **\$5995.00**

1795. PCGS. VF-35. Flowing Hair. 2 Leaves.
A wonderful example of our nation's first silver dollar
'type'. The detail is very bold and even. The surfaces
are devoid of significant marks and there are no mint
adjustment marks. And the color is a beautiful steel-
gray with a subtle golden hue. . . . #206756 **\$13950.00**

1795. PCGS. XF-45. Flowing Hair. 3 Leaves. A beautiful
early dollar with strong detail and nearly flawless
coin-gray surfaces that retain a far amount of luster
with delicate golden-green hues. Super eye appeal!
. #128867 **\$19995.00**

1796. PCGS. XF-40. Small Date, Large Letters. B-4,
BB-61. Sharp detail with pleasing light gray to
medium blue-gray surfaces. #216526 **\$10950.00**

1797. NGC. VF-35. 9x7 Stars, Large Letters. Well
detailed and problem-free with natural coin-gray
surfaces. #247180 **\$8450.00**

1797. PCGS. VF-30. 9x7 Stars, Large Letters. Popular
small eagle reverse. Strong detail with nice problem-
free mostly silver-gray surfaces. . . . #249580 **\$7795.00**

1797. PCGS. XF-45. 10x6 Stars. Well detailed with
pleasing surfaces that retain a trace of luster. Minor
mint made adjustment marks on the reverse.
. #216373 **\$11500.00**

1798. PCGS. VF-25. Large Eagle. B-15, BB-112.
Well detailed and problem-free with beautiful,
original coin-gray surfaces. #138277 **\$3075.00**

1798. PCGS. VF-30. Large Eagle. Well detailed with
pleasing coin-gray surfaces that display a touch of
gold and russet toning. #229039 **\$3250.00**

1799. NGC. XF-40. Well detailed with nice original
coin-gray surfaces. A tiny planchet clip, as made at
the mint, is noted below the date. Excellent eye
appeal. #243080 **\$3995.00**

1799. PCGS. VF-25. Attractive steel-gray surfaces
exhibit a pleasing problem-free look. #232113 **\$3075.00**

1799. PCGS. VF-30. Well detailed and problem-free
with beautiful light gray surfaces. . . . #139026 **\$3375.00**

1800. ANACS. VF-20. B-17a. Well detailed with
pleasing natural gray surfaces. #248754 **\$2625.00**

1800. NGC. XF-40. Well detailed with beautiful
problem-free surfaces that are a pleasing blend of
medium to warm gray. A very nice example.
. #243586 **\$4500.00**

1801. PCGS. F-12. Well detailed and problem-free
with pleasing coin-gray surfaces. A low mintage issue
with only 54,454 pieces struck. . . . #238558 **\$2395.00**

Highlights from this month's...



1821 Large Cent

NGC. MS-62 BN

N-2. The second rarest middle-date after the 1823 with a mintage of just 389,000. This is an attractive example with glossy chestnut brown surfaces with an olive-green hue. NGC has graded just 6 coins mint state.

Only \$11,575.00 #248533



1856 Flying Eagle Cent

PCGS. PR-64

Very attractive with choice problem-free surfaces that are light brown and nicely reflective with blue, lavender and faded orange-red hues. Outstanding for the grade with no significant abrasions.

Only \$25,500.00 #122682



1873 Two Cent Piece

PCGS. PR-65 RD

Closed 3. Highly reflective surfaces blend rich orange with touches of subtle ruby highlight. The strike is sharp and eye appeal is fantastic! Just 600 minted.

Only \$4,995.00 #240916



1866 Silver Three Cent Piece

PCGS. MS-67

Incredible quality with flawless semi proof-like surfaces that are beautifully toned with iridescent hues of blue, lavender, russet, and gold. Just 22,000 minted.

Only \$9,500.00 #230742



1928-D Mercury Dime

PCGS. MS-66 FB

Sharply struck with flashy mostly white luster accented by a trace of toning. A scarce date in this high of grade & with full band definition.

Only \$5,995.00 #242464



1877 Twenty Cent Piece

PCGS. PR-63 CAM

A rare proof-only date with a tiny mintage of just 350 pieces. This example exhibits deeply mirrored fields and frosted design elements. Bathed in lovely golden hue with a violet-blue band that rings along the reverse periphery. Outstanding eye appeal!

Only \$9,995.00 #206401



1924-D Standing Liberty Quarter

PCGS. MS-66 FH

One of the most challenging Standing Liberty Quarters to find with full head detail. The overall definition of this example is very bold with Liberty's head, shield rivets, stars, and eagle feathers all sharply defined. The surfaces display a champagne undertone with splashes of violet and sea-green on both sides. Only a single 66+ and three MS-67's have graded finer at PCGS.

Only \$8,995.00 #227971



1891 Seated Liberty Half Dollar

PCGS. MS-66

The last year of the Seated Half with booming blast white luster and a needle-sharp strike. Only 3 coins grade numerically finer at PCGS.

Only \$6,375.00 #250028

...One of a Kind Selections



1938-D Walking Liberty Half

PCGS. MS-67

Sharply struck and nearly mark-free with beautiful surfaces that display a lustrous satiny white patina. 1938-D has the third lowest mintage in the series just behind 1921 and 1921-D.

Only \$5,125.00 #225787



1875-S/CC Trade Dollar

PCGS. MS-63

The only major Trade Dollar variety listed in the Redbook and recognized by PCGS.

It is also the rarest of all Trade Dollars in mint state. This is a very attractive example with satiny white luster, a sharp strike, and exceptionally clean surfaces for the grade.

Only \$16,500.00 #242512

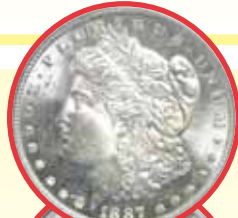


1885 Morgan Dollar

PCGS. PR-65 CAM

A beautiful combination of white mirrored fields and frosted devices that are much nicer than one would expect for only a 'Cameo' designation. A little color can be found along the periphery which only adds to already great eye appeal!

Only \$8,595.00 #250011



1887/6 Morgan Dollar

PCGS. MS-65 DMPL

Beautiful brilliant white mirrors provide great contrast for frosty devices. The curve of the 6 is distinct at the bottom of the 7. A popular overdate variety & tied for finest graded with one other coin. In an old 'green label' holder.

Only \$15,995.00 #238236



1853-D \$1 Gold Coin

PCGS. AU-58

Bright flashy luster with the barest touch of 'rub'. Just 6,583 minted and this one is a hair away from being Mint State!

Only \$6,250.00 #250005



1878-CC \$10 Gold Coin

NGC. AU-53

Attractive yellow-gold surfaces that exhibit ample remnant luster & a strong strike. The look is far cleaner than what is normally seen on early CC gold. Marks are few and minor with none of significance. The 1878-CC is among the rarest eagles from not only the Carson City Mint but also in the entire \$10 Liberty series. Of 3,244 pieces minted, only a scant 60-75 pieces are believed to still survive. Only 15 pieces have graded finer at NGC with the highest graded being a single MS-61 example.

Only \$32,500.00 #238774



1913-S \$10 Gold Coin

PCGS. MS-63

A low mintage 'key' date with just 66,000 minted. Most entered circulation as the average grade is one of the lowest in the series and high grade coins are truly rare. This is a lovely example with yellow-gold luster & choice surfaces that show just a few minor tics but nothing distracting from its' excellent eye appeal.

Only \$20,650.00 #247133



1924-D \$20 Gold Coin

PCGS. MS-64

Vibrant orange-gold luster and beautiful surfaces that are exceptionally clean. Just over 3 million minted but most were held at the mint and subsequently melted after FDR outlawed gold ownership in 1933.

Only \$16,500.00 #231602

ONE OF A KIND SELECTIONS

Coins are made available as they come into stock. Check our website – www.coastcoin.com – for our most up-to-date listing.

Colonial Coinage

(Undated). Washington. NGC. AU-58. Double-Head Cent. Military Bust. . . . #248481 \$895.00
(Undated). Washington. PCGS. VF-25.

. #227103 \$275.00

(1663-72). New Jersey. PCGS. VF-20. St. Patrick 1/2P. Mark Newby came to America from Dublin, Ireland in 1681 with copper pieces believed to have been struck between 1663 and 1672. The New Jersey General Assembly made these legal tender in 1682. This is a very attractive example on a nice light brown planchet. #249891 \$1995.00

C. 1792. Kentucky - Lancaster. NGC. MS-62. BN. Lettered Edge Token. Payable in Lancaster edge. #248557 \$775.00

C. 1792. Kentucky - Lancaster. PCGS. MS-63. BN. Halfpenny. #227861 \$950.00

C. 1792. Kentucky - Lancaster. PCGS. MS-63. RD. A lovely original coin with somewhat reflective mint red surfaces. #239259 \$1695.00

C. 1792. Kentucky - Lancaster. PCGS. MS-64. RB. Lettered Edge - Payable in Lancaster. Sharply struck with vibrant luster and beautiful mint red and light to medium brown surfaces. #249851 \$2195.00



1723. Rosa Americana. PCGS. AU-55. 2 Pence. Sharply struck with problem-free glossy brown surfaces. . . . #240822 \$1295.00

1723. Wood's Hibernia. NGC. AU-58. Halfpenny. #230706 \$525.00

1723. Wood's Hibernia. PCGS. AU-50. #249794 \$425.00

1723. Wood's Hibernia. PCGS. XF-45. Halfpenny. #249824 \$345.00

1760. Voce Populi. PCGS. VF-30. Halfpenny. P at Face. #238645 \$499.00

1783. Georgivs Triumpho. PCGS. XF-40. Copper Token. #246663 \$650.00

1787. Auctori Plebis Token. PCGS. AU-55. Nice glossy medium brown surfaces with just a trace of 'friction'. . . . #242987 \$1495.00

1787. Connecticut. PCGS. VF-20. Mail Bust Left, Laughing Head. #243042 \$450.00

1787. Connecticut. PCGS. VF-30. Laughing Head. Halfpenny. #210587 \$595.00

1787. Connecticut. PCGS. XF-45. Mailed Bust Left, Horned Bust Variety. . . #207777 \$950.00



1788. Massachusetts. NGC. AU-55. Half Cent. Attractive medium brown surfaces display solid strike and detail. . . . #249717 \$1595.00

1788. Vermont. PCGS. VG-10. Halfpenny. Bust Right. #249781 \$325.00

1795. Washington. PCGS. MS-64. BN. Washington Grate Halfpenny. Large Buttons. Reeded Edge. Well struck with glossy chestnut brown surfaces that retain a trace of faded mint red. #248447 \$1095.00

Half Cents



1793. PCGS. F-12. Well detailed with pleasing chocolate surfaces that are nicer than one would expect for an issue plagued by pitting and and other problems. . . #229405 \$9750.00

1802/0. NGC. Genuine. Reverse of 1802. VF Details. Obverse Scratched. Attractive medium brown color and well detailed. #207713 \$4750.00



1808. NGC. AU-58. Very nearly mint state with glossy chestnut brown surfaces and no obvious sign of 'rub'. . . #246128 \$3250.00

1809. NGC. Genuine. UNC Details - Improperly Cleaned. #248546 \$550.00

1857. PCGS. PR-65. BN. A beautiful chocolate brown proof with glossy problem-free surfaces that display subtle steel-blue and copper-red hues. 266 proofs were struck but fewer than 150 have survived. #241726 \$6995.00

Large Cents

1793. NGC. Genuine. VF Details, Corroded, Repaired. S-6 #250035 \$3995.00

1794. NGC. F-12. S-23. R-4+. A scarce and popular variety with a dramatic die break running parallel to the pole on the obverse. This example has attractive light brown surfaces and the typical weakness at the center of the reverse as struck. #236376 \$3250.00



1797. NGC. XF-45. S-130. Reverse of 1797, stems. Bold detail with attractive surfaces. The obverse die break at 10 o'clock, behind Liberty's head, is in its latest state. #248667 \$3250.00

1803. PCGS. XF-45. Small Date, Large Fraction. Sharp detail with attractive & problem-free mahogany brown surfaces. . #223293 \$1550.00

1804. NGC. MS-64. BN. Restrike. Struck from rusted, discarded Mint dies. The obverse is from an altered 1803 die while the reverse is an 1820 die. This is a beautiful glossy chestnut-brown example with no noteworthy marks or spots. . . . #205793 \$1995.00

1804. PCGS. AG-3. Attractive chocolate surfaces with solid detail for the grade. A scarce date with a mintage of 96,500. #234710 \$1895.00

1807. PCGS. VF-20. Comet. So named because of a mint produced flaw in the left obverse field. Well detailed with medium brown surfaces. #249834 \$1895.00



1807/6. PCGS. AU-58. Large 7. Nearly mint state with rich luster. Surfaces are glossy medium brown and exhibit sharp detail. #240687 \$7995.00

1808. PCGS. VF-25. A very attractive example of this first year Turban Head Cent. The detail is solid for the grade & the medium brown surfaces are choice. #249691 \$1095.00

1814. NGC. F-12. Crosslet 4. S-294. #249838 \$525.00

1817. PCGS. AU-58. 13 Stars. . #210235 \$850.00



1820. NGC. MS-65. BN. Rich satiny luster with beautiful soft brown surfaces that retain some faded mint red. Outstanding for the grade with excellent eye appeal.

..... #220016 \$2250.00

1821. NGC. MS-62. BN. N-2. The second rarest middle-date after the 1823 with a mintage of just 389,000. This is an attractive example with glossy chestnut brown surfaces with an olive-green hue. NGC has graded just 6 coins mint state. . . . #248533 \$11575.00

1821. NGC. XF-45. . A pleasing example of this scarce date. The detail is strong and the surfaces are an attractive medium brown. . . . #249747 \$2195.00

1821. NGC. XF-45. Strong detail & attractive medium brown surfaces. One of the middle-date Large Cent 'keys'. . . . #246855 \$1650.00

1826. PCGS. AU-53. . . . #237974 \$795.00

1826. PCGS. MS-63. BN. N-5. Very attractive with lustrous light chocolate brown surfaces that have a faint iridescent bluish hue. . . . #211152 \$2495.00

1828. NGC. XF-45. BN. Nice medium brown color. . . . #246898 \$425.00

1841. PCGS. MS-62. BN. Newcomb 2. Sharply struck with glossy brown surfaces that retain a trace of mint red. . . . #220694 \$1350.00

1843. NGC. MS-61. BN. Petite Head, Small Letters. . . . #225221 \$650.00

1847. NGC. MS-63. BN. . . . #235327 \$475.00

1848. PCGS. MS-63. BN. . . . #237429 \$595.00

1849. PCGS. AU-53. . . . #242187 \$275.00

1849. PCGS. MS-64. BN. Newcomb 20.

Sharply struck with lustrous olive-green surfaces. . . . #224362 \$1175.00

1853. NGC. MS-65. BN. . . . #202854 \$795.00

1853. NGC. MS-65. RB. N-19. #248378 \$995.00

1854. PCGS. MS-65. BN. Newcomb 3. . . . #126840 \$895.00



1857. NGC. MS-65+. BN. N-1. Large Date. Beautiful lustrous surfaces are velvety brown and nearly flawless with a tiny trace of faded red. . . . #248541 \$2450.00

Flying Eagle Cents

1856. PCGS. PR-63. A beautiful example of this classic rarity. The strike is very sharp and the reflective surfaces are very clean with a touch of copper-nickel 'red' blending nicely with soft brown. . . . #210865 \$19995.00

1856. PCGS. PR-64. Very attractive with choice problem-free surfaces that are light brown and nicely reflective with blue, lavender and faded orange-red hues. Outstanding for the grade with no significant abrasions. . . . #122682 \$25500.00

Indian Head Cents

1859. NGC. PR-64. Sharply struck with reflective fields and flashy copper-nickel tan brilliance. . . . #235682 \$2450.00



1861. PCGS. PR-64. Flashy copper-nickel luster with a faint multi-color patina. A pleasing example of this scarce early proof. . . . #250013 \$3450.00

1862. NGC. MS-65. . . . #249503 \$995.00

1862. PCGS. PR-66. CAM. . Incredible quality with intense copper-nickel red luster off highly reflective and nearly pristine surfaces. The strike is needle-sharp and the eye appeal is amazing! . . . #227607 \$5995.00

1863. PCGS. MS-63. . . . #129760 \$395.00

1864-C/N. PCGS. MS-65. . Very attractive with original surfaces that are nearly mark-free and display vibrant mint luster. . . . #234442 \$1495.00

1864-L. PCGS. AU-50. . . . #201891 \$339.00

1864-L. PCGS. XF-40. . . . #209008 \$265.00

1867. PCGS. VF-30. 67/67. . . . #207969 \$499.00

1867. PCGS. VF-35. . . . #249902 \$165.00

1867. PCGS. XF-45. 1867/67. . . . #215290 \$750.00



1868. NGC. PR-64. RD. Cameo. Beautiful faintly iridescent red surfaces with strong mirrored fields and frost on the devices. . . . #250066 \$2750.00

1869. NGC. PR-64. BN. . Sharply struck mirrored surfaces with glossy medium brown surfaces. . . . #250012 \$1169.00

1869. PCGS. MS-65. RB. Well struck with satiny luster and a pleasing, even blend of mint red and light olive-brown. Outstanding surfaces that display no significant marks or spots. . . . #220022 \$2750.00

1870. PCGS. MS-66. RB. Well struck with lustrous surfaces that are devoid of marks and spots & are nearly full red. . . . #229365 \$3625.00

1871. NGC. XF-45. . . . #249857 \$485.00

1873. PCGS. AU-50. Open 3. . . . #247794 \$235.00



1873. PCGS. XF-45. . Closed 3. Double LIBERTY. FS-101. The second most valuable Indian Cent variety, behind only the

1888/7. . . . #249903 \$3595.00

1874. PCGS. MS-62. BN. . . . #220600 \$225.00

1876. NGC. MS-65. RB. Well struck & mark-free with nearly full red surfaces. Housed in an early NGC holder. . . . #245959 \$1250.00

1881. NGC. PR-67. BN. Neon lavender, blue, and iridescent olive-brown explodes off nearly perfect surfaces. Incredible quality! . . . #242977 \$2495.00

1882. PCGS. PR-65. BN. . . . #233530 \$550.00

1887. NGC. MS-65. RB. . . . #247652 \$795.00

1887. PCGS. MS-65. RB. . . . #222170 \$895.00

1888. NGC. MS-65. RB. Well struck, flashy, and mostly red. . . . #244580 \$995.00

1889. PCGS. MS-63. RB. . . . #212770 \$195.00

1889. PCGS. MS-65. BN. . . . #226386 \$325.00

1889. PCGS. PR-65. RD. Beautiful iridescent golden-red surfaces with frosted design features. Hints of rose and lime further enhance outstanding eye appeal! . . . #223884 \$2250.00

1895. PCGS. MS-65+. RD. Beautiful surfaces with thick original mint red luster and a sharp strike. . . . #228953 \$1250.00

1898. NGC. MS-66. RB. . . . #250047 \$595.00

1898. PCGS. PR-65. RB. . #227472 \$825.00

1902. NGC. MS-64. RB. . . . #224318 \$185.00

1902. PCGS. MS-64. RD. . . . #134340 \$375.00

1903. PCGS. PR-63. RD. . . . #250058 \$450.00

1907. PCGS. MS-64. RD. . #203352 \$450.00

1909-S. PCGS. VF-30. . . . #201044 \$525.00

1909-S. PCGS. XF-40. . . . #233149 \$625.00

1909-S. PCGS. XF-40. #249859 \$725.00

Lincoln Cents

1909-SVDB. ANACS. XF-45. Nice problem-free medium brown surfaces. . . . #247131 \$1375.00



1909-SVDB. NGC. MS-65. RB. Well struck and very flashy with nearly full red surfaces. . . . #137463 \$4350.00

1909-SVDB. PCGS. MS-65. RD. . . . #206863 \$8900.00

- 1909-S. PCGS. VF-20. #200163 \$129.00
 1909-S. PCGS. VF-25. #128701 \$135.00
 1909-S. PCGS. VF-30. #136806 \$145.00
 1909-VDB. NGC. MS-66. RD.. #200534 \$450.00
 1909-VDB. PCGS. MS-67. RD. Intense mint red luster with a wonderful 'fresh' appearance. Nearly flawless. . . . #140204 \$1299.00
 1913. PCGS. PR-65. RB. A blend of medium brown and orange-red rests upon sharp matte surfaces. #216233 \$1095.00
 1914. PCGS. PR-66. RB. A beautiful blend of mint red and tan with faint ruby, green, and gold highlights. Sharply struck, lustrous, and nearly mark-free. . . . #249957 \$2750.00



1914. PCGS. PR-66+. RD. Incredible quality with bright mint red surfaces and a needle-sharp strike. On the brink of perfection with no noteworthy marks or blemishes. #239062 \$5625.00
 1914-D. NGC. XF-45. #210406 \$995.00
 1914-D. PCGS. VF-25. #119902 \$395.00
 1916-S. PCGS. MS-64. RB. . . . #211119 \$425.00
 1920-S. PCGS. MS-65. RB. Well struck with nearly flawless surfaces and crisp luster that is a lovely blend of tan and orange. #222803 \$2095.00
 1923. PCGS. MS-64. RD.. . . . #222484 \$129.00
 1923. PCGS. MS-65. RD.. . . . #229320 \$325.00
 1923-S. NGC. MS-65. RB. Well struck with glowing red and brown luster and nearly mark-free surfaces. A very tough coin in high grade with none grading finer at NGC than this example. #249770 \$5250.00



- 1924-S. PCGS. MS-65. RB. Well struck and highly lustrous with beautiful surfaces that are just slightly subdued mint red. A rare date at this grade level with no Red and Brown or Red color designated coins grading finer at PCGS. . . . #231020 \$2950.00
 1927-D. PCGS. AU-58. #249853 \$59.00
 1929-S. PCGS. MS-65. RD. . . . #139088 \$495.00
 1931. PCGS. MS-65. RD.. . . . #138958 \$195.00
 1931-D. PCGS. MS-65. RB. #236415 \$550.00
 1931-S. PCGS. MS-65. RB. . . . #226540 \$525.00
 1936. PCGS. XF-40. Doubled Die Obverse - Type 2. #249998 \$139.00
 1938. PCGS. PR-66. RD. #206809 \$350.00
 1941. PCGS. PR-65. RD. #137869 \$159.00
 1943-D/D. NGC. MS-66. VP-002. This popular and scarce Redbook listed variety has a

- boldly doubled mint mark with a second D southwest of the primary mint-mark. This example exhibits brilliant & sharply struck surfaces. #249670 \$1595.00
 1952. NGC. PR-68. RD. #235945 \$525.00
 1953. NGC. PR-67. RD.. . . . #235483 \$99.00
 1954. NGC. PR-68. RD. #124625 \$150.00
 1955 Doubled Die Obverse. PCGS. MS-62. BN. Well struck with velvety light brown surfaces. #237226 \$3750.00
 1995 Doubled Die. NGC. MS-68. RD. #118687 \$175.00
 2000. PCGS. MS-66. RD. "Cheerios". #249954 \$99.00

Two-Cent Pieces

- 1864 Large Motto. NGC. MS-66. RB. An attractive satiny blend of orange & brown luster with a sharp strike and no significant marks. #206065 \$1250.00
 1864 Large Motto. PCGS. MS-64. RB. #139108 \$399.00
 1864 Small Motto. PCGS. F-12. #130034 \$379.00
 1867. NGC. AU-55. Doubled Die Obverse. FS-101. IN GOD WE TRUST, the arrows, & parts of the shield are clearly doubled. #249911 \$1250.00
 1867. PCGS. F-15. Doubled Die Obverse. #245925 \$375.00
 1868. PCGS. MS-64. RB. #126120 \$595.00
 1870. PCGS. MS-64. RB. #209201 \$850.00



1871. NGC. PR-66. BN. Beautiful medium brown surfaces blend with violet-blue highlights and strands of mint red. #250038 \$1595.00
 1871. PCGS. MS-65. RB. Sharply struck with lots of mint red blending with soft olive-brown. Outstanding quality with no marks or spots. #210174 \$1875.00



1872. PCGS. MS-62. RB. The last year business strike Two Cent Pieces were made with a modest 65,000 minted. This is an attractive lustrous example with pleasing orange-red and brown surfaces and a sharp strike. An old 'rattler' holder. . . . #249769 \$3500.00
 1872. PCGS. XF-40. #224753 \$995.00
 1873 Closed 3. PCGS. PR-65. RD. Highly reflective surfaces blend rich orange with

- touches of subtle ruby highlight. The strike is sharp and eye appeal is fantastic! Just 600 minted. #240916 \$4995.00

Silver Three-Cent Pieces

- 1851-O. PCGS. MS-64. A better date and the only Three-Cent Silver struck at the New Orleans Mint. This is a lustrous example with no significant marks and a light golden hue. #207225 \$2395.00
 1852. PCGS. MS-62. #136817 \$325.00
 1858. PCGS. MS-64. Well struck with satiny white luster and very attractive surfaces that display no significant abrasions. Outstanding for the grade. #209177 \$1395.00
 1861. PCGS. MS-62. #207761 \$325.00



1866. NGC. MS-64. Blast white with modest frost on the design & super flashy proof-like fields. The strike is needle-sharp and the eye appeal is outstanding. Quite scarce with a mintage of 22,000 and a low survival rate. #246937 \$3450.00
 1866. PCGS. MS-67. Incredible quality with flawless semi proof-like surfaces that are beautifully toned with iridescent hues of blue, lavender, russet, and gold. Just 22,000 minted. #230742 \$9500.00



1867. PCGS. MS-62. Flashy & semi proof-like with pleasing silver-gray surfaces. A scarce date with a mere 4,000 minted. #222624 \$3375.00
 1870. NGC. PR-62. #250045 \$975.00

Nickel Three-Cent Pieces



1865. PCGS. PR-64. 1865 is the most common business strike in the series but is the 'key' date to a collection of proofs with a minuscule mintage of just 500 coins. This pleasing example is fully struck with nice mirrored surfaces and a very light golden hue. #211053 \$2875.00
 1873. NGC. PR-65. CAM. . . . #239032 \$750.00
 1875. PCGS. PR-65. #239039 \$750.00
 1881. PCGS. MS-64. #206379 \$325.00
 1883. PCGS. PR-66+. #228184 \$775.00
 1886. PCGS. PR-66. #204061 \$650.00
 1888. NGC. PR-66+. #249782 \$695.00

1888. PCGS. PR-65. #200550 \$469.00

Shield Nickels

1866. NGC. AU-53. #244948 \$229.00

1867 No Rays. NGC. MS-63. . . #222612 \$275.00

1867 No Rays. NGC. MS-65. No Rays.

. #136688 \$845.00

1868. PCGS. MS-65. #211766 \$875.00

1871. PCGS. MS-65. A better date with a modest mintage for the series at 561,000.

This is a beautiful Gem with a great strike and vibrant luster displaying subtle hues of green and gold. #231472 \$2250.00

1873. NGC. AU-50. Closed 3. Doubled Die

Obverse. VP-012. #248487 \$450.00

1873. PCGS. MS-62. CAC. Open 3.

. #249271 \$475.00

1875. PCGS. PR-65. #138295 \$995.00



1877. NGC. PR-66. CAM. Blazing nickel-white luster with nearly perfect surfaces and strong cameo contrast. . . . #227533 \$5995.00

1881. PCGS. VF-35. #248664 \$595.00

1882. PCGS. PR-64. #137734 \$575.00

1883. PCGS. AU-58. #129236 \$149.00

1883/2. PCGS. AU-58. FS-304. Very nearly mint state with lustrous surfaces and just a touch of 'rub'. #229126 \$1795.00

1883/2. PCGS. XF-40. Well detailed with pleasing light nickel-gray surfaces.

. #234741 \$995.00

Liberty Nickels

1883-N/C. NGC. MS-66. #139082 \$425.00

1883-N/C. PCGS. MS-65. #200560 \$275.00

1883-W/C. NGC. MS-64. #132368 \$295.00

1884. NGC. MS-62. #245594 \$225.00

1884. PCGS. MS-65. Well struck and devoid of significant marks with a rich luster patina that has a faint hue of gold and a tiny touch of lavender. #222806 \$1169.00

1884. PCGS. PR-65. #129601 \$525.00



1885. PCGS. PR-65. A beautiful Gem with light iridescent toning and great eye appeal! #140050 \$1350.00

1886. NGC. PR-65. #138953 \$875.00

1887. PCGS. PR-65. #224021 \$495.00

1889. PCGS. PR-65. #226369 \$525.00

1897. NGC. MS-64. #247076 \$339.00

1897. PCGS. MS-65. #207312 \$750.00

1899. PCGS. MS-66+. Booming mint luster and a needle-sharp strike with satiny smooth surfaces that are nearly mark-free.

Fantastic quality! #217997 \$1695.00

1900. NGC. PR-62. #248436 \$279.00

1901. NGC. MS-66. #203263 \$939.00

1901. PCGS. MS-65. #223095 \$450.00

1902. NGC. PR-64. #239878 \$375.00

1902. PCGS. PR-66+. #244895 \$950.00

1903. PCGS. MS-64. #249720 \$235.00

1904. PCGS. PR-65. #140897 \$495.00

1905. PCGS. MS-66. #212711 \$795.00

1905. PCGS. PR-66. #249926 \$795.00

1906. PCGS. PR-64. CAM. . . . #239589 \$495.00

1907. NGC. PR-65. #227817 \$475.00

1907. PCGS. PR-65. Proof. . . . #250020 \$489.00

1909. PCGS. PR-66. #205260 \$819.00

1910. PCGS. PR-67. Brilliant mirrored surfaces exhibit touches of a light gold hue and a razor-sharp strike. A virtually pristine coin with great eye appeal. . . . #238577 \$1495.00

1912. PCGS. MS-64. #130054 \$235.00



1912-S. PCGS. MS-63. The only Liberty Nickel date struck in San Francisco with the lowest mintage in the series at 238,000 coins.

This is a well struck example with shades of nickel-gray luster. #130715 \$2150.00

Buffalo Nickels

1913 T-1. PCGS. MS-67. #202698 \$950.00

1913-D T-1. NGC. MS-65. #138572 \$325.00

1913-D T-1. PCGS. MS-64. . . . #139669 \$235.00

1913-D T-2. PCGS. MS-62. . . . #200844 \$379.00

1913-D T-2. PCGS. VF-20. #203136 \$169.00

1913-D T-2. PCGS. VF-35. #226744 \$199.00

1913-S T-1. PCGS. MS-64. #204730 \$435.00

1913-S T-2. PCGS. AU-58. #209903 \$795.00

1913-S T-2. PCGS. MS-63. Very well struck with lustrous surfaces and no significant marks. #208372 \$1250.00

1914. PCGS. MS-64. #201237 \$265.00

1914-D. NGC. AU-58. #200398 \$395.00

1914-D. PCGS. AU-58. #200188 \$395.00

1915. NGC. MS-65. #203130 \$489.00

1915. PCGS. MS-64. #128436 \$215.00

1915. PCGS. MS-66. #139212 \$795.00

1915-D. NGC. MS-64. #243199 \$650.00

1915-D. PCGS. AU-58. #219347 \$225.00

1915-D. PCGS. MS-63. #212689 \$350.00

1915-S. NGC. MS-63. Well struck & high-end for the grade with minimal abrasions. #232384 \$1495.00

1916. PCGS. MS-64. #124510 \$139.00

1916-D. PCGS. MS-63. #219938 \$325.00

1916-S. NGC. MS-62. #228310 \$325.00

1916-S. NGC. MS-66. Sharply struck with brilliant luster & a light golden hue. Only 4 coins grade finer at NGC. . . #249800 \$3995.00

1917-D. PCGS. AU-58. #228069 \$469.00

1917-S. PCGS. AU-55. #224719 \$525.00



1918/7-D. PCGS. VF-35. Attractive light nickel-gray surfaces and solid detail, including a clear and bold overdate. . . . #236694 \$5500.00

1919. NGC. MS-64. #127206 \$295.00

1919-S. PCGS. XF-45. #239649 \$350.00

1920. PCGS. MS-66. Flashy brilliant luster and a sharp strike. #225022 \$1175.00

1920-D. NGC. XF-45. #249604 \$309.00

1923. PCGS. MS-64. #207276 \$295.00

1923-S. PCGS. AU-53. #224425 \$359.00

1924. NGC. MS-64. #136592 \$475.00

1924. NGC. MS-65. #230031 \$825.00

1924-D. NGC. AU-50. #249867 \$375.00

1924-S. PCGS. VF-35. #249896 \$595.00

1925. PCGS. MS-64. #119357 \$275.00



1925. PCGS. MS-67. Very flashy with booming luster that has a faint golden hue. Just six 67+ coins have graded finer at PCGS. #239482 \$4250.00

1925-D. PCGS. MS-63. Nice original surfaces with vibrant luster and a faint gold hue. A decent strike although a bit weak on the rev. as is typical for this date. #220029 \$1075.00

1925-S. NGC. XF-45. #249693 \$225.00

1926. NGC. MS-65+. #249703 \$359.00

1926. PCGS. MS-65. #203262 \$250.00

1926-D. PCGS. MS-63+. #247164 \$795.00

1926-S. NGC. VF-20. #200573 \$175.00

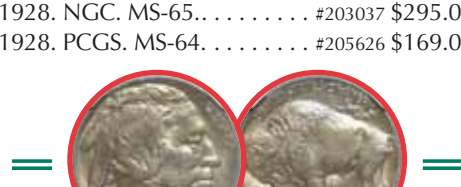
1926-S. PCGS. VF-30. #122097 \$295.00

1927. NGC. MS-64. #249265 \$145.00


1927. NGC. MS-65. #140931 \$295.00

1928. NGC. MS-65. #203037 \$295.00

1928. PCGS. MS-64. #205626 \$169.00



1928-D. NGC. MS-66. Well struck with no noteworthy marks and lustrous surfaces that display a very faint golden-green hue. #137524 \$2995.00

1928-D. NGC. MS-65.  . . . #232455 \$695.00
1928-S. PCGS. MS-63. #219019 \$725.00



1928-S. PCGS. MS-66. Incredible quality with bright lustrous surfaces that are devoid of significant marks & have delicate iridescent hues of ice-blue and gold. Only 2 coins have graded numerically finer at PCGS!

. #248682 \$12750.00

1929-D. PCGS. MS-65. #203064 \$975.00

1929-S. NGC. MS-66+. Well struck with vivid satiny luster. #248626 \$1195.00

1929-S. PCGS. MS-65. #200570 \$389.00

1930. PCGS. MS-67. Blazing luster & a sharp strike with a faint gold hue. #217572 \$2295.00

1931-S. PCGS. MS-65. #134169 \$275.00

1934. NGC. MS-65. #126853 \$225.00

1934. PCGS. MS-65. Spectacular iridescent gold, ice-blue, and lavender toning. Fantastic eye appeal! #203695 \$595.00

1934-D. NGC. MS-66. A sharply struck example with white lustrous surfaces that exhibit a hint of gold hue. Only a single

67 grades numerically finer at either NGC or PCGS! #130127 \$1395.00

1935. PCGS. MS-67. #209612 \$799.00

1935-D. NGC. MS-65. #130666 \$299.00

1935-D. PCGS. MS-65. #123032 \$325.00

1935-S. PCGS. MS-65. #138430 \$195.00



1936. PCGS. PR-66+.  . Brilliant. Nearly flawless and very flashy with bright lustrous untuned surfaces. #223853 \$2750.00

1936-D. PCGS. F-15. 3 1/2 Legs. A very attractive example of this scarce variety with solid detail. Many times rarer than the

1937-D 3-legged Buffalo. . . #131847 \$1395.00

1936-D. PCGS. MS-65. #122320 \$125.00

1936-S. PCGS. MS-66. #137989 \$229.00

1937. NGC. PR-65. Brilliant mirrored surfaces with just the faintest touch of gold toning. #139708 \$1250.00

1937. PCGS. MS-66. #122335 \$95.00

1937. PCGS. PR-66. A nearly flawless Premium Gem that is housed in an early green label holder. #208020 \$1595.00

1937-D 3 legs. PCGS. VF-20. . . #226133 \$695.00

1937-D 3 legs. PCGS. VF-35. . . #205733 \$875.00

1937-S. PCGS. MS-67. #241918 \$795.00

1938-D/D. NGC. MS-66. #122317 \$129.00

1938-D/D. PCGS. MS-67. #226345 \$409.00

1938-D/S. PCGS. MS-67. #201195 \$725.00



1938-D/S. PCGS. MS-67+. Blazing luster and mark-free surfaces with a beautiful golden-green hue. #245754 \$2125.00

Jefferson Nickels

1938. PCGS. PR-67. #217275 \$395.00

1943-P. PCGS. MS-66. Doubled Die Obverse. #226826 \$625.00

1944-S. NGC. MS-67. 5FS. . . #249901 \$625.00

1954. NGC. PR-69. #235056 \$139.00

1955. PCGS. PR-68+. CAM. . . #228316 \$225.00

1964. PCGS. MS-66. FS. #248630 \$895.00



1973-D. PCGS. MS-67. FS. Sharply struck with booming nickel-white luster. Tied for highest graded at PCGS with nothing finer. #249955 \$2350.00

1981-S. PCGS. PR-70. DCAM. Type 1. #249938 \$69.00

1987. NGC. MS-67. 6FS. #249898 \$225.00

1997. ANACS. MS-68. 6FS. . . . #249900 \$150.00

Bust Half Dimes

1795. PCGS. MS-64+.  . A wonderful Flowing Hair Half Dime with satiny luster over essentially mark-free surfaces. The strike is sharp with every strand of Liberty's hair being fully rendered. The original surfaces are choice and lightly toned in shades of lilac-gray and gold. Fantastic quality!

. #250049 \$35000.00



1795. PCGS. XF-45. Very attractive with sharp detail & original steel-gray shaded surfaces. A subtle champagne-hue and underlying luster add to outstanding eye appeal!

. #249880 \$6875.00

Seated Liberty Half Dimes

1858. PCGS. MS-67+.  . Blast white luster and nearly flawless surfaces. Only 3 coins at PCGS have graded finer. Super eye appeal!

. #249730 \$4375.00

1867. NGC. MS-62. This scarce date has the lowest regular issue mintage in the entire

1837 to 1873 Seated half dime series at a mere 8,000 coins. This is a flashy white example. #249933 \$1650.00

Bust Dimes

1796. PCGS. G-6. From the first year of dime production with a mintage of 22,135. This is an attractive example with solid detail and nice problem-free coin-gray surfaces.

. #140851 \$4500.00



1796. PCGS. VG-8.  . Outstanding for the grade with pleasing medium two-tone gray surfaces and strong, even detail. Marks are minimal and the eye appeal is excellent on this scarce, first-year United States dime!

. #249656 \$5595.00

1821. PCGS. XF-45. Small Date. #233682 \$650.00

1823/2. PCGS. VF-30. Large E's. #248478 \$495.00

1824/2. NGC. XF-40. Well detailed gunmetal-gray surfaces. Scarce and very desirable. #245556 \$1195.00

1827. PCGS. VF-20. #238545 \$269.00

1831. PCGS. AU-58. #249863 \$895.00

1833. PCGS. XF-40. #204629 \$299.00

1834. NGC. MS-65. Sharply struck with lustrous surfaces that display beautiful iridescent gold, turquoise, and lavender-gray toning. #248534 \$4750.00

Seated Liberty Dimes

1838. PCGS. AU-55. No Drapery, Large Stars. #223446 \$509.00

1839. PCGS. AU-55. No Drapery. #249816 \$509.00

1840. PCGS. AU-53. No Drapery. #249700 \$419.00

1840-O. NGC. XF-45. No Drapery. #248573 \$750.00

1845-O. PCGS. VF-35. Scarce in any grade as just 230,000 were minted and the survival rate was apparently quite low. #233942 \$1025.00



1846. PCGS. AU-53. Well struck with lustrous light silver-gray surfaces. One of the 'keys' to the series and super tough in any grade with just 31,300 minted. . . #249762 \$9795.00

1849-O. PCGS. AU-50. #249765 \$995.00

1854. PCGS. MS-64. Arrows. . . #249865 \$935.00

1855. PCGS. AU-50. Arrows. . . #249895 \$229.00

1860-S. PCGS. F-15. #246338 \$345.00

- 1862-S. PCGS. VF-30. #239658 \$795.00
 1862-S. PCGS. XF-45. Solid for the grade with light silver-gray surfaces. A modest mintage of only 180,750 and a very desirable Civil War date. #249665 \$1725.00
 1863. PCGS. XF-45. A scarce and popular Civil War date that saw a mintage of just 14,000 pieces. #249886 \$3500.00
 1863-S. NGC. F-15. #246285 \$375.00
 1863-S. PCGS. XF-40. A date that must have seen heavy circulation as it is much scarcer than the 157,000 coin mintage might suggest. This is a nice example with strong detail and pleasing silver-gray surfaces. #234494 \$1095.00
 1864-S. NGC. VF-30. #248582 \$475.00
 1864-S. PCGS. AU-53. Well struck & lustrous light silver-gray surfaces. Splashes of lavender-gold ring the obverse outer core. A popular Civil War date. #249761 \$1295.00



1866. PCGS. XF-45. Very scarce w/a mintage of just 8,000 business strikes. The 725 proofs are seen more frequently as they were saved by collectors. This example is very pleasing with solid detail and nice silver-gray surfaces. #249667 \$2975.00
 1869-S. NGC. AU-53. #248654 \$489.00
 1874. NGC. PR-64. CAM. Arrows. A pleasing example of this two-year 'Arrows' type with a subtle gold patina and nice frost on the devices. 700 pieces minted. #249748 \$1425.00
 1875-S. PCGS. MS-62. Mintmark Below. #249768 \$295.00



- 1878-CC. PCGS. MS-62. The obverse consists of rich golden-violet toning with blue-green splashes along the outer core. On the reverse, white surfaces add a crescent of gold and blue-green along the outer core. Sharply struck and very lustrous. #249779 \$2750.00
 1880. PCGS. AU-58. #249784 \$750.00
 1887. PCGS. PR-66. Mirrored silver-gray surfaces with a blend of gold, blue, ruby, and lime hues. Very attractive. #249796 \$1195.00
 1888. PCGS. MS-65. #133653 \$650.00
 1888-S. PCGS. MS-62. #231855 \$619.00
 1889. NGC. MS-65. #247245 \$595.00
 1891. PCGS. MS-63. #128703 \$315.00

Barber Dimes

- 1894-O. PCGS. AU-55. Sharply struck with lustrous mostly white surfaces that show

light peripheral toning on the obverse. A modest 720,000 minted and very hard to find in high grade. #248350 \$1195.00



1898. PCGS. PR-67. A beautiful and original Superb Gem with nearly flawless surfaces & attractive russet-orange, gold, olive-green, and turquoise toning. #248440 \$2500.00
 1900. NGC. PR-66. An original Premium Gem with nearly flawless surfaces and attractive iridescent toning. #248633 \$1275.00
 1905-O. PCGS. MS-66+. Very attractive with nearly flawless surfaces and a satiny light champagne core accented by beautiful iridescent colors. #248216 \$2875.00
 1909. PCGS. MS-63. #223000 \$225.00
 1913. NGC. PR-65. #221234 \$995.00
 1916. NGC. MS-64. #237302 \$259.00

Mercury Dimes

1916. PCGS. MS-64. FB. #135748 \$175.00



- 1916-D. PCGS. MS-63. FB. A pleasing example of this rare date which is the 'key' to the series. Very sharply struck with rich lustrous surfaces that have a nice light golden tint. #241570 \$29375.00
 1916-S. NGC. MS-64. FB. #235436 \$315.00
 1918-S. PCGS. MS-64. #124426 \$750.00



- 1918-S. PCGS. MS-64. FB. A scarce date that is tough to find with Full Bands. This is a highly lustrous and well struck example with a light golden tint. #233777 \$4950.00
 1919-D. PCGS. MS-64. FB. Well struck and a near-Gem with speckles of gray-gold toning over lustrous surfaces. #207892 \$3995.00
 1920-S. PCGS. MS-64+. FB. Sharply struck and original with a satiny white base accented by attractive toning. A scarce issue with full bands. #248581 \$3195.00
 1921-D. NGC. AU-58. FB. Sharply struck and very nearly mint state with a lustrous blend of silver-gray and light gold hue. #244953 \$1795.00
 1923. PCGS. MS-65. FB. Full Bands. #137461 \$325.00
 1923-S. PCGS. MS-64. FB. Bright satiny luster with sprinkles of lavender-gold tint on the

obverse and a sharp strike. A better date that is particularly tough to find with full band detail. #221806 \$2650.00
 1928-D. PCGS. MS-66. FB. Sharply struck with flashy mostly white luster accented by a trace of toning. A scarce date in this high of grade and with full band definition. #242464 \$5995.00



- 1928-S. PCGS. MS-66. FB. Blazing luster and a great strike with no significant marks. Outstanding for the grade! #226734 \$7500.00
 1928-S. PCGS. MS-67. Vibrant mint luster with light golden toning. The surfaces are nearly flawless. #240449 \$1825.00
 1929. PCGS. MS-67. FB. #211390 \$995.00
 1929-D. PCGS. MS-64. FB. #138668 \$195.00
 1929-D. PCGS. MS-65. #202241 \$145.00
 1930. PCGS. MS-65. FB. #222154 \$689.00
 1934. NGC. MS-66. FB. #228301 \$235.00
 1936-S. PCGS. MS-65. FB. #135767 \$150.00
 1937. PCGS. MS-67. FB. #200594 \$225.00
 1937-D. NGC. MS-67. FB. #205669 \$469.00
 1939. NGC. MS-67. FB. #244886 \$895.00
 1939. PCGS. MS-65. FB. #126942 \$199.00
 1939-D. NGC. MS-67. FB. #128187 \$195.00
 1945-S Micro 's'. PCGS. MS-67. Micro S. #218167 \$425.00
 2016-W. NGC. SP-70. FR. 1/10 oz. .9999 fine. #249963 \$425.00
 2016-W. PCGS. SP-70. 1/10 oz. .9999 fine. #249962 \$425.00

Roosevelt Dimes

1950. PCGS. PR-68. CAM. #250030 \$695.00
 1951-S. NGC. MS-68. #249969 \$250.00
 1968-D. NGC. MS-68. FB. #250041 \$550.00

Twenty Cent Pieces

1875. PCGS. PR-60. Brilliant reflective fields and sharp detail. A popular first year of the denomination proof with a mintage of just 2,790 coins. A pleasing appearance for the grade. #249809 \$1495.00
 1875. PCGS. VF-35. #232876 \$450.00



- 1875-CC. NGC. MS-62. The only collectible Carson City Mint Twenty Cent Piece and an issue that is plagued with very poor strikes. This very well struck example exhibits vibrant satiny silver-white luster and plenty of eye appeal. #203856 \$3095.00

- 1875-CC. PCGS. MS-63. Well struck with lustrous silver-gray surfaces that are devoid of significant marks and have a faint golden hue. #204888 \$3950.00
 1875-CC. PCGS. VF-35. #212293 \$850.00
 1877. PCGS. PR-63. CAM. A rare proof-only date with a tiny mintage of just 350 pieces. This example exhibits deeply mirrored fields and frosted design elements. Bathed in lovely golden hue with a violet-blue band that rings along the reverse periphery. Outstanding eye appeal! . . #206401 \$9995.00

Bust Quarters

1815. NGC. F-15. B-1. #249929 \$650.00



1818. PCGS. AU-55. Well struck and lustrous silver-white surfaces. Golden-blue toning rings the periphery. #249947 \$3125.00
 1821. PCGS. VF-20. #239925 \$525.00
 1835. PCGS. VF-35. #215621 \$275.00

Seated Liberty Quarters

1852. PCGS. AU-53. Repunched Date. Lustrous light silver-gray surfaces & solid detail. Repunch is a minor variety. #249780 \$1075.00
 1855-S. NGC. AU-55. Lustrous silver-white surfaces with faint gold tint & a sharp strike. 396,400 were minted and a date that saw heavy circulation with a low survival rate. #249772 \$2950.00
 1856. NGC. MS-62. #249972 \$619.00
 1858-O. PCGS. VF-25. #249741 \$195.00
 1858-O. PCGS. VF-35. #249777 \$299.00
 1860-S. PCGS. FR-2. #250023 \$550.00
 1861. NGC. MS-62. #230502 \$550.00
 1861-S. NGC. VF-20. Tough in any grade as just 96,000 were made and the survival rate appears to be very low. This is an attractive example with strong detail & problem-free coin-gray surfaces. #249687 \$2550.00
 1861-S. NGC. VG-10. Well detailed and a borderline FINE with all letters of LIBERTY visible. #248651 \$1095.00



1863. PCGS. MS-66. Very sharply struck with no significant marks and vibrant brilliant luster displaying a faint gold hue. Outstanding quality!. . . . #249715 \$9750.00

1866. PCGS. AU-55. Motto. Just 16,800 minted with very few survivors. This is an attractively toned, lustrous example. . . #249904 \$3450.00
 1880. PCGS. MS-65. A beautiful mostly white Gem with frosted devices and great eye appeal. Just 13,600 minted. Housed in an old green label holder. . . . #244628 \$2650.00
 1882. NGC. MS-64. Satiny white luster and a sharp strike. A scarce date with just 15,200 minted. #249830 \$1695.00
 1890. PCGS. MS-61. #249764 \$975.00

Barber Quarters



1892. PCGS. PR-67. DCAM. A beautiful first year proof in the Barber series that contrasts deeply mirrored fields with thickly frosted devices. Surfaces are brilliant white with a faint hint of gold. Only 6 DCAM grade numerically finer at PCGS. . #250056 \$8950.00
 1896-O. PCGS. XF-45. #128873 \$950.00
 1897. PCGS. PR-65. DCAM. A beautiful Gem Proof with heavy frost on the design and ultra deep mirrored fields. The surfaces are mostly white with just a hint of gold. #248655 \$3750.00
 1902. NGC. PR-67. A Superb Gem with pristine mirrored proof surfaces & beautiful rich golden-violet toning. . . #249869 \$2695.00
 1911-D. NGC. AU-58. #248313 \$850.00
 1914-S. PCGS. VF-25. #246843 \$675.00
 1914-S. PCGS. VG-10. #223226 \$250.00

Standing Liberty Quarters



1916. NGC. VG-10. Solid detail with a legible date and only light wear into the tops of the digits. The color is an original medium gray and the overall eye appeal is wonderful. #209422 \$6375.00
 1917 T-1. NGC. MS-65. FH. Rich cream-white satiny surfaces and a needle-sharp strike. #130505 \$1195.00
 1917-D T-1. PCGS. MS-64. FH. Well struck and lustrous with light golden-tan toning. #204006 \$1175.00
 1917-D T-2. NGC. MS-66. Fantastic quality with booming mint luster off original sur-

- faces that show a trace of peripheral toning. #249920 \$1975.00
 1917-S T-1. PCGS. MS-62. FH. #211267 \$950.00
 1917-S T-1. PCGS. MS-64. FH. Sharply struck with lustrous surfaces. The obverse is crisp white and the reverse adds a blend of light lavender and olive. #245900 \$1795.00



- 1917-S T-1. PCGS. MS-65. FH. Sharply struck with vibrant luster. The obverse has a light golden glow while the reverse has an attractive blend of golden-orange & powder-blue toning. Housed in an old green label holder. #219672 \$2795.00



- 1918-S. PCGS. MS-66. FH. Sharply struck with rich lustrous surfaces that display light gold, lavender, and ice-blue toning. Super quality and one of the finest Full Head examples graded of this scarce date. #249908 \$19750.00
 1921. PCGS. F-15. #200838 \$415.00
 1923. NGC. MS-66+. Well struck & mark-free with satiny white luster and a faint sprinkle of light golden-green toning on the reverse. #247018 \$1095.00
 1923-S. NGC. VF-30. Well detailed with pleasing surfaces. #235767 \$1095.00
 1923-S. PCGS. AU-50. Strong detail with a light silver-white center and peripheral toning. #233220 \$1995.00
 1924. NGC. MS-65. FH. #250015 \$1750.00
 1924-D. PCGS. MS-63. FH. Sharply struck and lustrous surfaces with a blend of silver and russet-gold toning. . . . #235517 \$1169.00
 1924-D. PCGS. MS-66. FH. One of the most challenging Standing Liberty Quarters to find with full head detail. The overall definition of this example is very bold with Liberty's head, shield rivets, stars, and eagle feathers all sharply defined. The surfaces display a champagne undertone with splashes of violet and sea-green on both sides. Only a single 66+ and three MS-67's have graded finer at PCGS. #227971 \$8995.00
 1925. PCGS. MS-63. FH. #203309 \$550.00
 1926. NGC. MS-64. #227809 \$379.00

1926. PCGS. MS-64. FH. #215966 \$795.00
 1926-D. PCGS. MS-64. #118004 \$399.00
 1927-D. NGC. MS-65. #129925 \$695.00
 1927-S. PCGS. F-15. #200937 \$189.00
 1929. PCGS. MS-64. FH. #137884 \$685.00
 1929-S. PCGS. MS-63. FH. . . . #123246 \$550.00
 1930. PCGS. MS-64. FH. #246454 \$595.00
 1930. PCGS. MS-65. FH. #123245 \$895.00
 1930. PCGS. MS-66. FH. Booming white luster and a sharp strike with very clean surfaces. Housed in an old green label holder. #204240 \$1895.00

Washington Quarters



1932-D. NGC. MS-62. Cream-white luster with a faint golden hue. The surfaces are devoid of significant marks. #137476 \$1295.00
 1932-S. PCGS. MS-63. #130683 \$599.00
 1932-S. PCGS. XF-45. #135695 \$129.00
 1937. PCGS. PR-66+. #249874 \$595.00
 1937-S. PCGS. MS-65. #241017 \$375.00
 1954. NGC. PR-68. #237745 \$75.00
 1983-D. PCGS. MS-67. #249875 \$650.00

Bust Half Dollars



1795. NGC. VF-30. 2 Leaves. Solid detail with pleasing light gray surfaces. #203034 \$5250.00
 1801. NGC. F-15. The first year of the Heraldic Eagle reverse with a mintage of just 30,289 pieces. #248604 \$2575.00
 1806/5. NGC. XF-40. Attractive coin-gray surfaces with solid detail & strong eye appeal. #138157 \$1995.00
 1807. NGC. VF-30. Draped Bust. #240578 \$895.00
 1810. PCGS. XF-40. O-103. . . . #223367 \$550.00
 1811/10. NGC. AU-55. Lustrous silver-gray surfaces with just a touch of wear. #250007 \$2450.00
 1811/10. PCGS. AU-55. Lustrous light silver-gray surfaces with just a touch of wear. #244691 \$2550.00
 1813. NGC. XF-40. #246820 \$525.00
 1817. PCGS. XF-45. #247785 \$875.00
 1822. PCGS. AU-53. #226560 \$750.00

1823. PCGS. AU-53. #220036 \$675.00
 1826. PCGS. XF-45. #207758 \$275.00
 1827. NGC. AU-53. Square Base 2. #248537 \$395.00
 1827. NGC. AU-58. #205000 \$795.00
 1827. PCGS. AU-53. #204360 \$595.00
 1827. PCGS. MS-64. Overton 114. Square Base 2. A beautiful Bust Half with abundant mint luster and green-gray toning with hints of gold, orange, and turquoise. Very sharply struck & nearly mark-free. . . . #207376 \$4500.00
 1827. PCGS. XF-45. Square Base 2. #210694 \$250.00
 1831. NGC. AU-53. #248538 \$425.00
 1831. NGC. MS-61. A pleasing look with lustrous silver-white surfaces and a subtle gold hue. #222011 \$1095.00



1832. NGC. MS-65. Small Letters. Very well struck w/beautiful, nearly flawless surfaces. The luster is vibrant with a brilliant center framed by delicate russet & turquoise at the rim. A fabulous Bust Half with outstanding eye appeal!. #247883 \$5500.00
 1834. NGC. MS-61. Lustrous silver-gray surfaces with pastel blue and gold highlights. #250039 \$1095.00
 1834. PCGS. MS-64+. Large Date, Small Letters. A beautiful near-Gem with crisp white satiny luster, a few touches of violet hue, and a sharp strike. Choice surfaces are devoid of significant marks. #249292 \$4250.00
 1835. NGC. MS-61. Crisp white surfaces and a sharp strike. #250029 \$1195.00
 1838. NGC. AU-58. #243781 \$975.00



1839-O. NGC. AU-55. Sharp detail with lustrous medium gray surfaces. The only 'affordable' New Orleans mint Bust Half as the 1838-O had a mintage of just 20 coins. #249669 \$4250.00

Seated Liberty Half Dollars

1842. PCGS. AU-55. Small Date, Reverse of 1842. Sharp detail with rich toning and vivid underlying luster. #247225 \$995.00

1846. PCGS. XF-40. Tall Date. . #247501 \$450.00
 1851-O. NGC. AU-50. #249763 \$895.00
 1852-O. PCGS. VF-30. Well detailed with original medium gray surfaces. 144,000 minted which is the lowest for any New Orleans mint half dollar in the 1850's. #224217 \$1275.00



1853. PCGS. MS-64. Arrows and Rays. Extremely well struck with vibrant creamy white luster & strong eye appeal. A popular one year sub-type. #247221 \$5500.00
 1853. PCGS. XF-40. Arrows and Rays. #225079 \$395.00
 1861. PCGS. PR-63. Nicely mirrored surfaces reflect a stunning sunset-orange hue with touches of blue-green along the periphery. A popular Civil War date. . . . #233681 \$1695.00
 1861-O. NGC. AU-53. #249967 \$975.00
 1865. NGC. XF-45. #248589 \$995.00
 1865. PCGS. MS-62. A modest 511,400 minted during the final year of the Civil War. Few entered commerce and the survival rate seems extremely low. This is a very attractive example with satiny white luster over choice surfaces that display very few marks. #247209 \$3250.00
 1867. NGC. MS-63. A modest 449,300 coins minted with relatively few mint state survivors. This is a sharply struck and lustrous example that displays rich champagne and silver-gray tone with olive-blue highlights. #249958 \$1995.00
 1867-S. NGC. MS-61. Sharply struck with lustrous white surfaces and no distracting marks. A tough date to find in mint state. #247120 \$2250.00



1868. NGC. PR-65. CAM. Sharply struck with choice silver-white surfaces that have a very subtle golden tint. The devices are frosted white and contrast beautifully with the deep mirrored fields. Just 600 minted and few are 'Cameos'. #248511 \$5250.00
 1873. NGC. AU-58. Arrows. . . . #222215 \$795.00
 1873-CC. PCGS. G-6. Arrows. . . #249422 \$469.00

1875. PCGS. MS-64. Sharply struck w/booming white luster, frosted design features, and a subtle hint of gold tint. . . . #245227 \$1695.00
- 1875-CC. NGC. MS-61. Well struck with satiny mint luster that has a very faint golden hue. . . . #235619 \$2995.00
1881. PCGS. MS-62. Sharply struck with original reflective surfaces that display rich golden-brown and turquoise toning. A very scarce date as a business strike with a mintage of just 10,000. . . . #245278 \$1595.00
1889. PCGS. MS-62. Sharply struck with no significant marks and flashy white surfaces. A thin splash of lavender and gold clings mostly along part of the reverse periphery. Only 12,000 business strikes made & much more often seen in the proof format. . . . #249668 \$2075.00
1891. PCGS. MS-66. The last year of the Seated Half with booming blast white luster and a needle-sharp strike. Only 3 coins grade numerically finer at PCGS. . . #250028 \$6375.00

Barber Half Dollars

1892. NGC. MS-62. . . . #250026 \$850.00
- 1892-S. PCGS. AG-3. . . . #215813 \$225.00
- 1892-S. PCGS. G-4. . . . #221161 \$299.00
- 1893-S. PCGS. G-6. . . . #215905 \$209.00



- 1900-S. PCGS. MS-64. Silver-white surfaces with a blend of lavender-gold and subtle touches of blue-green tint. A scarce date in mint state. . . . #250067 \$3195.00
1901. ANACS. MS-61. . . . #250044 \$595.00
- 1901-O. NGC. AU-50. A better date that is particularly scarce in high grade. . . . #248628 \$1495.00
1902. PCGS. MS-63. . . . #207834 \$935.00
- 1903-O. PCGS. VF-20. . . . #249839 \$250.00
- 1906-D. PCGS. AU-55. . . . #228466 \$495.00
- 1906-D. PCGS. AU-58. . . . #230413 \$650.00
- 1908-O. PCGS. AU-55. . . . #248547 \$469.00
1909. PCGS. MS-61. . . . #249820 \$695.00

Walking Liberty Half Dollars

1916. NGC. MS-63. Well struck with crisp white luster. . . . #203105 \$1195.00
1916. NGC. MS-65. A nice original Gem with frosty luster & splashes of deep gold toning. . . . #223013 \$2295.00
- 1916-S. PCGS. AU-58. Well struck with crisp white luster and just a touch of 'rub'. . . . #213986 \$2595.00



- 1916-S. NGC. MS-65. Sharply struck with shimmering mint luster and a light golden hue. . . . #245603 \$7500.00
- 1916-S. PCGS. MS-63. . . . #231567 \$4995.00
- 1916-S. PCGS. MS-64. . . . #225933 \$6500.00
1917. NGC. MS-65. . . . #244972 \$1150.00
- 1917-S Rev. PCGS. AU-58. . . . #235868 \$925.00
- 1918-D. PCGS. MS-63. Very attractive with vivid satiny white luster, a strong strike, and nice clean surfaces. . . #133301 \$3095.00
- 1919-S. NGC. AU-58. . . . #245620 \$7995.00



- 1919-S. PCGS. MS-64. Beautifully preserved with choice original surfaces. The luster is satiny and brilliant with a faint golden glow. The second rarest 'Walker' in mint state behind only the 1921-S. . . #228971 \$13250.00
1920. NGC. MS-66. Satiny white luster and a sharp strike with beautiful smooth surfaces that are nearly mark-free. Just a single 67+ coin has graded finer at NGC. . . . #248530 \$10995.00
- 1921-D. PCGS. VG-10. . . . #236589 \$699.00
- 1921-D. PCGS. VG-8. . . . #248788 \$595.00
- 1921-S. ANACS. F-12. . . . #237064 \$325.00
- 1928-S. PCGS. MS-64. Well struck and attractive with lustrous original surfaces that display light golden toning. #248550 \$4375.00
- 1929-D. PCGS. AU-58. . . . #236786 \$650.00
1934. NGC. MS-65. . . . #126854 \$385.00
- 1934-D. NGC. MS-64. . . . #234546 \$495.00
- 1934-S. NGC. MS-63. . . . #248706 \$995.00
- 1934-S. NGC. MS-64. . . . Lustrous lavender-gold shaded surfaces with a few sprinkles of

- blue in the peripheral areas. A sharp strike and wonderful originality! . #249798 \$1295.00
- 1935-D. NGC. MS-65. Well struck with rich satiny luster and minimal marks. . . . #234806 \$1375.00



- 1935-S. PCGS. MS-66. Flashy brilliant luster and a sharp strike with a billowing luster cartwheel. Outstanding quality & housed in an old green label holder. . . #210259 \$3895.00
1936. PCGS. MS-67. Bold satiny white luster and a great strike with nearly mark-free surfaces. . . . #224804 \$1250.00
- 1936-D. PCGS. MS-66. . . . Satiny white luster and a sharp strike with a hint of gold hue on the obverse. . . . #137873 \$1095.00
1937. PCGS. MS-64. . . . #129669 \$159.00
1937. PCGS. MS-66. . . . #228590 \$525.00
1937. PCGS. PR-64. . . . #223923 \$750.00
1937. PCGS. PR-67. Bright and flashy with wonderfully original surfaces that are essentially flawless with just a trace of peripheral toning. . . . #205738 \$1875.00
- 1937-D. NGC. MS-67. Sharply struck with rich satiny luster over beautiful clean surfaces that have a faint golden hue. . . . #138347 \$2875.00
- 1937-D. PCGS. MS-67. Blazing satiny luster with a light golden hue and a sharp strike. . . . #231733 \$3250.00
1938. NGC. PR-67. Essentially flawless and flashy with a faint golden hue. . . . #234914 \$1295.00
1938. PCGS. MS-64. . . . #127867 \$250.00



1938. PCGS. MS-67. . . . Sharply struck with thick luster, a faint golden glow, and nearly mark-free surfaces. Super quality! . . . #218919 \$2295.00
- 1938-D. PCGS. MS-67. Sharply struck and nearly mark-free with beautiful surfaces that display a lustrous satiny white patina. 1938-D has the third lowest mintage in the series just behind 1921 and 1921-D. . . . #225787 \$5125.00
1939. PCGS. MS-65. . . . #118383 \$225.00



- 1939-D. PCGS. MS-67. Blazing mint luster with a hint of gold hue. A sharp strike with nearly perfect surfaces. . . . #218920 \$1595.00
1940. PCGS. MS-64. #118002 \$135.00
1940. PCGS. MS-66. #133644 \$289.00
- 1940-S. PCGS. MS-66. #224839 \$995.00
- 1941-D. NGC. MS-65. #203831 \$149.00
- 1941-D. NGC. MS-66. #200624 \$239.00
- 1941-S. PCGS. MS-65. Semi PL, great strike, old holder. . . . #207288 \$750.00
- 1941-S. PCGS. MS-65. #140039 \$450.00
- 1941-S. PCGS. MS-66. #203014 \$895.00
- 1942-D. PCGS. MS-65. #203828 \$159.00
- 1942-S. PCGS. MS-66. #203027 \$695.00
- 1943-S. PCGS. MS-64. #205191 \$125.00
- 1943-S. PCGS. MS-65. #134325 \$225.00
- 1944-D. NGC. MS-67. #200385 \$775.00
- 1944-S. NGC. MS-64. #120770 \$119.00
- 1944-S. PCGS. MS-65. #123398 \$250.00
- 1944-S. PCGS. MS-66. #205608 \$595.00
1945. NGC. MS-66. #125780 \$179.00
- 1945-S. NGC. MS-66. #135457 \$295.00
- 1945-S. PCGS. MS-65. #200625 \$145.00
- 1945-S. PCGS. MS-65+. #230432 \$169.00
1946. NGC. MS-64. #200497 \$109.00
- 1946-S. NGC. MS-67. Sharply struck with flashy white luster and nice clean surfaces. #205656 \$1250.00
- 1946-S. PCGS. MS-66+. #126265 \$450.00
- 1946-S. PCGS. MS-67. Blazing luster and a sharp strike with a sprinkle of toning. #224298 \$1395.00



1947. PCGS. MS-67. Beautiful glowing luster with a light golden hue. The strike is excellent and the eye appeal is great. #214864 \$1895.00
- 1947-D. NGC. MS-67. Vibrant mint luster and a sharp strike with a light golden tint on the reverse. #229151 \$1250.00
- 1947-D. PCGS. MS-66. . . . #129968 \$325.00

Franklin Half Dollars

- 1948-D. PCGS. MS-66. FBL. . . #227792 \$325.00
- 1949-S. PCGS. MS-64. FBL. . . #248716 \$279.00
1950. PCGS. PR-65. #216321 \$575.00

1951. PCGS. PR-66. #208636 \$550.00
1951. PCGS. PR-67. Nearly flawless brilliant white mirrored surfaces with a few tiny sprinkles of color. #226262 \$1825.00
- 1952-S. NGC. MS-65. #209000 \$109.00
1953. PCGS. PR-64. #122230 \$149.00
- 1953-S. NGC. MS-66. #233575 \$165.00
1954. NGC. PR-66. #127150 \$89.00
1954. PCGS. PR-68. #229667 \$555.00
- 1954-S. PCGS. MS-64. FBL. . . #239422 \$75.00
- 1954-S. PCGS. MS-65+. Bugs Bunny. FS-401. #250008 \$325.00
- 1954-S. PCGS. MS-65+. FBL. . . #249737 \$295.00
- 1954-S. PCGS. MS-66. FBL. Vibrant white luster and a sharp strike w/beautiful surfaces. #225472 \$995.00
1956. NGC. PR-66. Type-1. . . . #236920 \$189.00
1956. NGC. PR-67. UCAM. . . . #230406 \$229.00
1956. NGC. PR-68. CAM. Type-2. #227835 \$225.00



1956. NGC. PR-69. Type-1. Blast white and nearly perfect! The 'Type-1' is about 10 times rarer than the 'Type-2'. . . . #239629 \$1650.00
1956. NGC. PR-69. CAM. Type-2. #220814 \$525.00
1958. NGC. PR-68. CAM. . . . #224428 \$495.00
1958. NGC. PR-69. #240170 \$550.00
1959. NGC. PR-69. #238162 \$425.00
1959. PCGS. MS-66. #233646 \$325.00
- 1959-D. PCGS. MS-66. FBL. . . #217823 \$395.00
1961. NGC. PR-68. CAM. #229978 \$279.00

Kennedy Half Dollars

1964. NGC. PR-68. Accented Hair. #237013 \$295.00
1964. NGC. PR-69. #242395 \$109.00
1964. PCGS. PR-67. Accented Hair. #230358 \$159.00
- 1974-S. PCGS. PR-70. CAM. . . . #249970 \$295.00

Bust Dollars

1795. PCGS. VF-20. Flowing Hair. 2 Leaves. BB-21. A lovely example of the first silver dollar 'type'. Clean looking surfaces exhibit solid detail, an even strike, and steel-gray shading. #248020 \$8995.00
1796. PCGS. XF-40. Small Date, Large Letters. B-4, BB-61. Sharp detail with pleasing light gray to medium blue-gray surfaces. #216526 \$10950.00
1797. NGC. VF-35. 9x7 Stars, Large Letters. Well detailed & problem-free with natural coin-gray surfaces. #247180 \$8450.00

1797. PCGS. XF-45. 10x6 Stars. Well detailed with pleasing surfaces that retain a trace of luster. Minor mint made adjustment marks on the reverse. #216373 \$11500.00
1798. PCGS. VF-25. Large Eagle. B-15, BB-112. Well detailed and problem-free with beautiful, original coin-gray surfaces. #138277 \$3075.00



1798. PCGS. VF-30. Large Eagle. Well detailed with pleasing coin-gray surfaces that display a touch of gold and russet toning. #229039 \$3250.00
1800. NGC. XF-40. Well detailed w/beautiful problem-free surfaces that are a pleasing blend of medium to warm gray. #243586 \$4500.00

Seated Liberty Dollars

1840. PCGS. XF-45. Well detailed w/pleasing light gray surfaces that retain a trace of mint luster. #222712 \$1650.00
1841. NGC. VF-30. #134691 \$725.00
1843. NGC. AU-58. Well struck with lustrous light silver-white surfaces. . . . #246991 \$1995.00
1843. NGC. XF-45. #233670 \$950.00
1845. PCGS. AU-50. Well detailed with choice original surfaces. A better date w/a mintage of 24,500. #249907 \$1750.00
1846. PCGS. VF-30. #217817 \$695.00
1846. PCGS. XF-40. #202660 \$975.00
1859. PCGS. PR-66. Incredible quality with deep mirroring and nearly flawless surfaces that shine through stunning gold, rose and blue toning. 800 minted but only 400 to 450 were actually distributed to collectors. #250048 \$32500.00
- 1860-O. NGC. XF-45. #249930 \$850.00



- 1860-O. PCGS. MS-61. Sharply struck with flashy white luster & fewer marks than what is typical for the grade. . . . #137467 \$2650.00

1869. NGC. AU-58. Lustrous white surfaces with a touch of faint lavender-gold. Sharply struck and only light 'rub'. . . #249790 \$2595.00
1870. PCGS. MS-63+. Sharply struck & highly lustrous. The reverse is blast white while the obverse is mostly white except for a very delicate touch of gold. . . . #241904 \$5750.00



- 1870-CC. PCGS. AU-55. Sharply struck and proof-like with flashy white surfaces. Just 12,462 minted during the first year of production at the Carson City mint. #249791 \$12500.00
1871. PCGS. F-12. #238326 \$495.00
1872. PCGS. G-6. #136927 \$395.00

Trade Dollars

1873. PCGS. MS-63. Sharply struck with frosty white luster and semi proof-like surfaces. From the first year of the series & an under-rated date with a mintage of just 396,635. Housed in an old green label holder. #219335 \$3750.00



- 1875-CC. PCGS. MS-64. A needle-sharp strike with frosty champagne-white luster and touches of golden violet-blue along the periphery. An exceptional example of this scarce date with just 3 pieces grading numerically finer at PCGS. #230687 \$10500.00
- 1875-CC. PCGS. VF-35. #250059 \$995.00
- 1875-S. PCGS. MS-62. Chop Mark. Satiny white luster with a hint of gold and a sharp strike. A single chop blends well into the eagle. #248916 \$1295.00
- 1875-S/CC. PCGS. MS-63. The only major Trade Dollar variety listed in the Redbook and recognized by PCGS. It is also the rarest of all Trade Dollars in mint state. This is a very attractive example with satiny white luster, a sharp strike, & exceptionally clean surfaces for the grade. . . #242512 \$16500.00
1877. PCGS. AU-55. #246243 \$650.00

1877. PCGS. AU-58. #249661 \$995.00
- 1877-CC. NGC. AU-58. Scarce in all grades as the majority of the mintage was exported to the Orient where most were melted or 'chop-marked'. This is a pleasing well struck coin with lustrous white surfaces. #249678 \$3995.00
- 1878-S. PCGS. XF-40. #226977 \$489.00



1880. PCGS. PR-66. CAM. Beautiful mostly white surfaces with a very light golden tint. The design features are heavily frosted and contrast boldly with the deep reflective fields. A proof-only date with a mintage of just 1,987 coins. Nearly flawless and truly magnificent! #239017 \$13750.00

Morgan Dollars

- 1878-CC. NGC. MS-62. GSA plastic. #201377 \$895.00
- 1878-CC. NGC. MS-63. #125795 \$595.00
- 1878-CC. NGC. MS-64. #205704 \$850.00
- 1878-CC. PCGS. MS-63. #120714 \$595.00
- 1878-CC. PCGS. MS-63. #249878 \$750.00
- 1878-CC. PCGS. MS-64. #200731 \$875.00
- 1878-S. NGC. MS-66+. Shimmering white luster and beautiful, nearly flawless surfaces. #249931 \$1595.00
- 1878-S. PCGS. MS-63. #201608 \$149.00
- 1878-S. PCGS. MS-64. PL. #214094 \$395.00
- 1878-S. PCGS. MS-65. #201344 \$425.00
- 1878-S. PCGS. MS-65. #227666 \$525.00
- 1878-S. PCGS. MS-66. #131157 \$975.00



- 1878-S. PCGS. MS-67. A Superb Gem with brilliant and lustrous blast white surfaces. The cheek and neck are very clean and the surfaces are nearly pristine. The strike is needle-sharp. Only a single coin has graded numerically finer at PCGS. . #210526 \$8750.00
- 1878-S. PCGS. MS-66+. #210526 \$8750.00
- 1878-S. PCGS. MS-66+. Booming white luster & a great strike with superb surfaces. Outstanding quality and wonderful eye appeal! #213803 \$3450.00

- 1878-7/8TF. NGC. MS-63. #200522 \$495.00
- 1878-7/8TF. PCGS. MS-63. Strong 7/8TF. #204544 \$575.00
- 1878-7TF. ANACS. MS-62. Reverse of 1879. #240723 \$295.00
- 1878-7TF. NGC. MS-64. Reverse of 1878. #125667 \$345.00
- 1878-7TF. PCGS. MS-63. DMPL. Reverse of 1878. #210387 \$869.00
- 1878-7TF. PCGS. MS-64. Reverse of 1878. #123617 \$350.00



- 1878-7TF. PCGS. MS-66. Reverse of 1879. Vibrant frosty white luster and a great strike with no significant marks. Fantastic quality with just four 64+ coins and a single 67 grading finer at PCGS. . . . #222730 \$7995.00
- 1878-8TF. NGC. MS-64. #200514 \$795.00
- 1878-8TF. PCGS. MS-63. #137024 \$650.00
- 1878-8TF. PCGS. MS-63. PL. VAM 23. Crazy Lips. #129746 \$825.00
- 1879-CC. PCGS. AU-53. Capped Die. A pleasing example of this 'key' date. Strong detail and lustrous white surfaces with just a hint of champagne and gold hue. #205728 \$3295.00
- 1879-CC. PCGS. MS-62. Capped CC. Outstanding for the grade with satiny white luster, a sharp strike, and fewer marks than expected for the grade. None of which are heavy or distracting. #225421 \$7250.00



- 1879-CC. PCGS. MS-62. Perfect CC. Blast white and a sharp strike with frosted devices and fewer marks than typically seen for the grade. #210209 \$8995.00
- 1879-S. NGC. AU-58. Reverse of 1878. #247753 \$399.00
- 1879-S. NGC. MS-63. Reverse of 1878. Sharply struck with semi proof-like surfaces and vibrant champagne-white luster. #211476 \$1695.00
- 1879-S. NGC. MS-67. #127744 \$995.00

- 1879-S. PCGS. MS-63. Reverse of 1878. Frosty white luster & a sharp strike. #124126 \$1750.00
 1879-S. PCGS. MS-65+. #126981 \$295.00
 1880. NGC. MS-64. PL. #243569 \$595.00



1880. PCGS. MS-66. Satiny white luster with subtle hints of gold at the periphery. Virtually mark-free smooth surfaces and a sharp strike. #207690 \$1750.00
 1880-CC. NGC. MS-63. #134032 \$795.00
 1880-CC. NGC. MS-65.
 GSA plastic. #125788 \$1595.00
 1880-O. NGC. MS-63. #249766 \$825.00
 1880-S. PCGS. MS-66. 8/7. #249683 \$699.00
 1880-S. PCGS. MS-66+. #207357 \$450.00
 1880-S. PCGS. MS-66+. #247674 \$595.00
 1881. PCGS. MS-65. #124171 \$475.00
 1881-CC. NGC. MS-65.
 GSA plastic. #200130 \$1350.00
 1881-CC. PCGS. MS-65. Blast white and a very sharp strike. #203869 \$1150.00
 1881-CC. PCGS. MS-65. #230131 \$1295.00



- 1881-CC. PCGS. MS-67+. #249852 \$22500.00
 1881-S. NGC. MS-67. #228204 \$895.00
 1882-CC. NGC. MS-62.
 GSA plastic. #201120 \$375.00
 1882-CC. NGC. MS-64. #200134 \$425.00
 1882-CC. NGC. MS-65.
 GSA plastic. #134445 \$675.00
 1882-CC. PCGS. MS-63. PL. #123573 \$475.00
 1882-CC. PCGS. MS-64. #232413 \$425.00
 1882-CC. PCGS. MS-65. #200136 \$595.00
 1882-CC. PCGS. MS-65. DMPL. Deeply mirrored white fields and frosted designs. #228488 \$2325.00



- 1882-CC. PCGS. MS-67. An amazing white Superb Gem with a faint hint of gold hue. All the design elements are sharp and the surfaces are void of significant abrasions. Outstanding eye appeal! . . . #207602 \$7195.00
 1882-O. PCGS. MS-65. #250060 \$825.00
 1882-O/S. PCGS. MS-62. #118964 \$395.00
 1883-CC. NGC. MS-63. #201993 \$395.00
 1883-CC. NGC. MS-63. PL.
 GSA plastic. #130297 \$475.00
 1883-CC. NGC. MS-64.
 GSA plastic. #234319 \$450.00
 1883-CC. NGC. MS-64+.
 GSA plastic. #249973 \$489.00
 1883-CC. NGC. MS-65.
 GSA plastic. #200759 \$595.00
 1883-CC. PCGS. MS-63. #204891 \$375.00
 1883-CC. PCGS. MS-63. PL. #234838 \$450.00
 1883-CC. PCGS. MS-64+. DMPL. Heavy frost on the design contrasts nicely with deep mirrored fields and gives this cameo near-Gem excellent eye appeal. #229289 \$1050.00
 1883-CC. PCGS. MS-65. #200138 \$595.00
 1883-O. NGC. MS-63.
 GSA plastic. #122429 \$395.00
 1884-CC. NGC. MS-62.
 GSA plastic. #126541 \$375.00
 1884-CC. NGC. MS-63.
 GSA plastic. #234674 \$395.00
 1884-CC. NGC. MS-64.
 GSA plastic. #234675 \$450.00
 1884-CC. NGC. MS-65.
 GSA plastic. #221862 \$575.00
 1884-CC. PCGS. MS-63. #200516 \$375.00
 1884-CC. PCGS. MS-65. #123579 \$595.00




- 1884-CC. PCGS. MS-66. #223661 \$1439.00
 1884-O. NGC. MS-64. #249599 \$109.00
 1884-O. PCGS. MS-64. DMPL. #210329 \$550.00
 1885. NGC. MS-64. #205334 \$119.00



1885. PCGS. PR-65. CAM. A beautiful combination of white mirrored fields and frosted devices that are much nicer than one would expect for only a 'Cameo' designation. A little color can be found along the periphery which only adds to already great eye appeal! #250011 \$8595.00
 1885-CC. NGC. MS-65.
 GSA plastic. #249960 \$1650.00
 1885-CC. PCGS. MS-63. #202210 \$885.00
 1885-CC. PCGS. MS-63. DMPL. Frosty devices provide an excellent contrast for wonderful mirrored fields. Choice surfaces display an original subtle gold dusting. A popular Carson City date with a mintage of only 228,000 pieces. #127009 \$1469.00
 1885-CC. PCGS. MS-65. Crisp white satiny luster and a sharp strike. A thin crescent of rich multi-color toning hugs the obverse periphery. #200729 \$1500.00
 1886. PCGS. MS-63. DMPL. #249756 \$325.00
 1886. PCGS. MS-64. DMPL. #226561 \$569.00
 1886. PCGS. MS-65. PL. #230713 \$395.00
 1886-S. PCGS. MS-62. #205337 \$595.00
 1886-S. PCGS. MS-64. Flashy white luster and a sharp strike. #124109 \$1295.00
 1887. NGC. MS-66. #204498 \$375.00
 1887. PCGS. MS-64. PL. #224794 \$275.00
 1887. PCGS. MS-65. PL. #133818 \$395.00
 1887. PCGS. MS-65+. #235961 \$295.00
 1887-S. NGC. MS-63. #138916 \$475.00
 1887-S. PCGS. MS-63. #120716 \$495.00
 1887/6. NGC. MS-64. VAM 2. Satiny white with some peripheral gold tone and a sharp strike. #133268 \$1250.00
 1887/6. PCGS. MS-63. Satiny white luster and a sharp strike. #128881 \$995.00
 1887/6. PCGS. MS-65. DMPL. Beautiful brilliant white mirrors provide wonderful contrast for frosty devices. The look is very clean for the grade and the strike is very sharp. The curve of the 6 is clear & distinct at the bottom of the 7. A popular overdate variety with only 12 pieces graded 'DMPL' by PCGS in all grades. This example is tied for finest graded with one other coin and is housed in an old 'green label' holder. #238236 \$15995.00




- 1887/6-O. PCGS. MS-63. Satiny white luster with fewer marks than expected for the grade. #126928 \$2095.00


1888. PCGS. MS-65. #200142 \$249.00
 1888-O. PCGS. AU-50. Doubled Die
 Obverse. #248150 \$795.00
 1888-O. PCGS. MS-65. #203932 \$375.00
 1888-O. PCGS. MS-65. . #137342 \$539.00
 1888-O. PCGS. MS-65. PL. #225931 \$875.00
 1888-S. PCGS. AU-53. #237964 \$295.00
 1888-S. PCGS. AU-58. #126398 \$395.00
 1888-S. PCGS. MS-63. #124461 \$895.00
 1889. NGC. MS-63. #123504 \$79.00



1889-CC. NGC. XF-45. An attractive example of this rare date with strong detail and problem-free original surfaces. #244730 \$4995.00
 1889-CC. PCGS. F-12. . A well detailed example of this 'key' date with attractive light silver-gray surfaces. #229885 \$1695.00
 1889-CC. PCGS. F-15. A well detailed, problem-free example of this key date. #140253 \$1695.00
 1889-S. ANACS. MS-62. #244814 \$350.00
 1889-S. PCGS. AU-58. #125676 \$295.00
 1889-S. PCGS. MS-62. . #248392 \$489.00



1890-CC. NGC. MS-63+. DMPL. . Blast white with frosted devices & deep reflective fields that create strong cameo contrast. #249918 \$3250.00
 1890-CC. PCGS. MS-61. #128140 \$875.00
 1890-O. NGC. MS-63. #123483 \$235.00
 1890-O. PCGS. MS-63. #203689 \$239.00
 1890-O. PCGS. MS-64. #200286 \$325.00
 1890-O. PCGS. MS-65. Bright white luster and a great strike on a date that often comes poorly struck. Only minor marks and great eye appeal! #207140 \$1095.00
 1890-S. PCGS. MS-64. #203484 \$350.00
 1891. PCGS. MS-63. #204625 \$240.00
 1891. PCGS. MS-64. #205340 \$595.00
 1891-CC. PCGS. MS-64. Sharply struck with golden peripheral toning and reflective fields. #204866 \$1595.00

1891-O. PCGS. MS-62. #123069 \$345.00
 1891-S. NGC. MS-62. #125318 \$185.00
 1891-S. NGC. MS-63. #120780 \$350.00
 1891-S. PCGS. MS-63. PL. #208885 \$495.00
 1891-S. PCGS. MS-64. #123070 \$649.00
 1891-S. PCGS. MS-65. Blast white and a sharp strike. #136674 \$1625.00
 1892. NGC. MS-63. #220274 \$750.00
 1892. PCGS. AU-55. #247720 \$260.00
 1886-S. PCGS. MS-64. Flashy white luster and a sharp strike. #124109
 1892-CC. PCGS. MS-62. . Frosty white luster and a great strike with exceptionally clean surfaces for the grade. #232637 \$2695.00




1892-CC. PCGS. MS-65. Blast white and a sharp strike with a clean cheek and no significant marks. Excellent eye appeal and outstanding quality for the grade. #202336 \$7895.00
 1892-CC. PCGS. VF-25. #227594 \$499.00
 1892-CC. PCGS. XF-40. #205480 \$850.00
 1892-O. PCGS. MS-63. #123411 \$775.00
 1892-O. PCGS. MS-64. Well struck with blast white satiny surfaces. #210801 \$1049.00




1892-O. PCGS. MS-65. A mintage of 2.7 million, yet seldom seen in Gem or better. This example has gorgeous silky white mint luster & nearly mark-free surfaces. A touch of softness about the ear, but the overall strike is far better than typically seen on this date. #206709 \$3450.00
 1892-S. PCGS. AU-50. Well detailed with nice mint luster remaining. The surfaces are a pleasant silver-white. An attractive example of this 'key' date. #129604 \$2595.00
 1892-S. PCGS. VF-30. #203684 \$295.00
 1892-S. PCGS. VF-35. #223179 \$345.00
 1893. PCGS. AU-50. #204890 \$950.00
 1893. PCGS. AU-53. Sharply struck silver-white surfaces with a hint of gold hue. #131867 \$1025.00

1893. PCGS. AU-58. Well struck and lustrous white surfaces. So close to being mint state! #128087 \$1375.00
 1893. PCGS. MS-62. Satiny white luster and a sharp strike. Very nice surfaces exhibit fewer marks than expected for the grade! #224511 \$2295.00
 1893. PCGS. MS-64+. A frosty white example with just a little subtle gold highlight. A better date with a sharp strike and surfaces that are devoid of significant abrasions. #207253 \$3875.00
 1893. PCGS. XF-45. #212456 \$795.00




1893-CC. PCGS. MS-63. A lovely example with blast white satiny luster. The strike is sharp and distinct on an issue known for a 'pancake' look. #140455 \$10500.00
 1893-S. PCGS. G-4. Solid detail with pleasing medium gray surfaces. The 'key' date to the series. #129441 \$3375.00
 1893-S. PCGS. VG-8. . Well detailed and very attractive with light silver-gray surfaces. #249890 \$5095.00
 1894. NGC. MS-63. Well struck w/a pleasing appearance and lustrous white surfaces. A lovely example of this scarce date which saw a mintage of just 110,000 coins. #134228 \$5895.00
 1894-O. PCGS. MS-61. Crisp white luster and an above average strike. #211340 \$2950.00




1894-O. PCGS. MS-65. . One of the finest known examples of this scarce date. PCGS has graded just 15 coins MS-65 & two 65+ while NGC has graded just 7 MS-65's. Neither service has graded a coin numerically finer and just 3 of these coins have received CAC approval. The present coin is exceptionally nice with vibrant satiny luster over choice surfaces. The strike is as bold as you'll find for this date and while mostly brilliant, there is a subtle light golden patina

that accents the eye appeal of this amazing coin. Destined to be a highlight in a top Morgan Dollar collection! #249826 \$65000.00


- 1894-S. PCGS. MS-62.  Well struck and very flashy with satiny white luster & exceptionally clean surfaces. . . . #228558 \$2250.00
 1894-S. PCGS. XF-40. . . . #237035 \$325.00
 1895-O. PCGS. AU-58. Frosted white luster and a sharp strike with semi proof-like fields. . . . #248712 \$5250.00




- 1895-S. PCGS. MS-63. A pleasing example with crisp white luster and a sharp strike. The surfaces show just minor abrasions and none that distract from this coins excellent eye appeal. A scarce date in a very desirable grade. . . . #210553 \$8500.00
 1895-S. PCGS. MS-65. A beautiful example of this scarce date that is well struck with lustrous white surfaces. Known to come heavily abraded; this example is remarkably clean. Only 4 coins grade numerically finer at PCGS. . . . #224752 \$21950.00
 1895-S. PCGS. XF-40. Strong detail and pleasing coin-gray surfaces. #218647 \$1950.00
 1896. NGC. MS-66.  . . . #127934 \$469.00
 1896-O. PCGS. MS-61. A pleasing example of this scarce date with satiny white luster and a solid strike. . . . #211286 \$2195.00



- 1896-S. PCGS. MS-63. Well struck and attractive with satiny white surfaces that have a very faint golden hue. . . . #201362 \$4595.00
 1897. NGC. MS-65. . . . #124100 \$350.00
 1897-O. NGC. MS-61. Sharply struck with satiny white luster. . . . #126419 \$1495.00
 1897-O. PCGS. AU-58. . . . #130190 \$525.00
 1897-O. PCGS. MS-61. Crisp brilliant luster and a much better strike than typically seen for this scarce date. . . . #239627 \$1495.00
 1897-S. PCGS. MS-63. . . . #125158 \$259.00
 1897-S. PCGS. MS-64. . . . #117034 \$369.00
 1897-S. PCGS. MS-64. PL. . . . #208182 \$595.00


1898. PCGS. MS-65. . . . #232808 \$235.00
 1898-O. NGC. MS-66+. . . . #237012 \$550.00
 1898-O. PCGS. MS-63. PL. . . . #245370 \$195.00
 1898-O. PCGS. MS-65. . . . #118697 \$250.00
 1898-O. PCGS. MS-65. DMPL. Blast white with stunning 'black & white' contrast between the mirrored fields and the frosted devices. . . . #208953 \$1250.00
 1898-S. PCGS. AU-58. . . . #126678 \$450.00
 1898-S. PCGS. MS-63.  Sharply struck with attractive surfaces that are blast white except for a tiny trace of color at the rim. . . . #138416 \$1225.00
 1898-S. PCGS. MS-63+. Sharply struck with frosty white surfaces and a light ring of gold at the rim. . . . #246836 \$1125.00
 1899. NGC. MS-62. . . . #201947 \$325.00
 1899. PCGS. MS-63. DMPL. . . . #232450 \$875.00
 1899. PCGS. MS-64. . . . #134338 \$465.00
 1899. PCGS. MS-66. Satiny blast white luster and a sharp strike with nice clean surfaces. . . . #212442 \$2625.00
 1899. PCGS. PR-63. Sharply struck w/choice mirrored surfaces. Shades of champagne-gold tone blend with touches of lime and hints of silver-white. Good eye appeal and high-end for the grade! An old green label holder. . . . #231137 \$3750.00
 1899-S. PCGS. MS-63. Satiny white luster and well struck. . . . #128640 \$1150.00



1900. PCGS. MS-65. PL.  A very scarce coin in Gem, Proof-Like with just 6 PL's grading numerically higher. This sharply struck example has reflective surfaces and a super clean look. . . . #211718 \$4750.00
 1900-O/CC. PCGS. AU-50. . . . #249858 \$419.00
 1900-S. PCGS. AU-58. . . . #212863 \$375.00
 1900-S. PCGS. MS-63. . . . #240664 \$850.00
 1901. PCGS. AU-50. . . . #128308 \$469.00
 1901-O. PCGS. MS-66. PL. Very impressive quality with reflective white mirrored fields and subtle gold hue. The strike is needle-sharp & the surfaces are nearly mark-free. . . . #241280 \$2125.00
 1901-S. PCGS. MS-64. Crisp white luster with a hint of gold tint and a sharp strike. . . . #130493 \$2295.00
 1902. PCGS. MS-63. . . . #123316 \$339.00
 1902. PCGS. MS-65. . . . #125656 \$465.00
 1902-S. NGC. MS-63+. Well struck with crisp mint luster. . . . #249868 \$1250.00


- 1902-S. PCGS. MS-65. A beautiful Gem that was probably from the end of an original roll. The obverse is satiny white with a touch of gold and turquoise at the rim while the reverse has attractive light golden-orange toning. . . . #127640 \$2395.00
 1903-O. NGC. MS-65. Sharply struck with vibrant luster and original toned surfaces. . . . #130124 \$1050.00
 1903-O. PCGS. MS-66. Beautiful satiny white luster with a sharp strike and a great 'look'. . . . #231665 \$1450.00
 1903-O. PCGS. MS-67. Blast white with nearly perfect surfaces. Just 12 67+ coins have graded finer at PCGS. . . . #140274 \$4750.00
 1904. NGC. MS-63. . . . #207911 \$495.00
 1904. PCGS. MS-65. Sharply struck with a flashy white center framed by a touch of peripheral toning. . . . #211084 \$1995.00
 1904-O. PCGS. MS-67. Blast white & sharply struck with incredible luster intensity and very clean surfaces. . . . #237222 \$4350.00
 1904-S. PCGS. AU-55. Well struck with crisp white luster. Nearly mint state with just a touch of 'rub'. . . . #211651 \$2350.00
 1904-S. PCGS. XF-45. . . . #230790 \$625.00



1921. PCGS. MS-67. Incredible quality with blast white luster, a great strike, and nearly pristine surfaces. A whopping 44 million minted with this coin being tied for the finest graded at PCGS! . . . #242094 \$11500.00
 1921-D. NGC. MS-64. . . . #200238 \$425.00
 1921-D. PCGS. MS-64. . . . #209999 \$489.00
 1921-S. NGC. MS-63. . . . #207877 \$169.00
 1921-S. NGC. MS-64. . . . #205172 \$295.00
 1921-S. PCGS. MS-64+.  . . . #222228 \$595.00

Peace Dollars



1921. PCGS. MS-64.  Well struck with crisp white luster. Marks are minimal and eye appeal is strong. . . . #137725 \$2495.00

1921. PCGS. MS-63. Crisp white luster and well struck. #124486 \$1049.00
 1921. PCGS. MS-64. #204046 \$1650.00
 1922. PCGS. MS-65. #221739 \$165.00
 1922-S. PCGS. MS-64. #126622 \$299.00
 1923. PCGS. MS-66. #134912 \$475.00



1923. PCGS. MS-67. Satiny white surfaces and a virtually flawless look. The strike is very sharp and distinct on both sides. While common in lower grades, at this grade level, this date becomes extremely elusive and desirable. Only 10 MS-67+ coins have graded finer at PCGS. #237030 \$4250.00
 1923-D. NGC. MS-64. #205325 \$495.00
 1923-D. PCGS. MS-65+. Crisp white luster and a sharp strike with nice clean surfaces. #243545 \$1650.00
 1924. NGC. MS-66. #210394 \$525.00
 1925. PCGS. MS-66. #205585 \$550.00



1925. PCGS. MS-67. Blast white and a sharp strike with beautiful clean surfaces. #206032 \$3750.00
 1926. NGC. MS-66. Vibrant satiny white luster and a sharp strike with beautiful clean surfaces. #228489 \$1575.00
 1926. PCGS. MS-64. #200197 \$299.00
 1926. PCGS. MS-65+. #226787 \$850.00
 1926-D. NGC. MS-64+. #249928 \$750.00
 1926-D. NGC. MS-65. Blast white and sharply struck. #130293 \$1175.00
 1926-D. PCGS. MS-64. #124491 \$625.00
 1926-S. PCGS. MS-64. #201127 \$395.00
 1927. ANACS. MS-64. VAM-1. #249815 \$450.00
 1927. NGC. MS-63. #117881 \$325.00
 1927-D. NGC. MS-62. #128342 \$499.00
 1928. PCGS. AU-58. #136571 \$489.00
 1934. NGC. MS-65. #123433 \$895.00
 1935. PCGS. MS-65. #139241 \$750.00
 1935. PCGS. MS-66+. Creamy white luster and a sharp strike with nearly pristine surfaces. Super quality! . . . #210807 \$4500.00

- 1935-S. PCGS. MS-64. #200680 \$995.00
 1935-S. PCGS. MS-66. Beautiful rich satiny mint luster over clean, smooth surfaces. The strike is sharp and the eye appeal is exceptional! #233344 \$3750.00

Eisenhower Dollars

- 1973-D. NGC. MS-66. #249554 \$250.00
 1973-D. NGC. MS-66+. #248909 \$495.00

Early Silver Commemoratives

- 1893 Isabella Quarter. PCGS. MS-61. #135599 \$475.00
 1900 Lafayette Dollar. NGC. Genuine. UNC Details - Obverse improperly cleaned. #243857 \$495.00
 1918 Lincoln. NGC. MS-64. #228599 \$289.00
 1920 Pilgrim. NGC. MS-66. #224152 \$415.00
 1920 Maine. PCGS. MS-65. #133318 \$395.00
 1921 Alabama. NGC. MS-64+. #249710 \$550.00
 1921 Alabama. PCGS. MS-63. #224802 \$375.00
 1921 Alabama. PCGS. MS-66. Vibrant satiny mint luster and well struck. #208264 \$1595.00



- 1922 Grant, Star. PCGS. MS-65. Sharply struck with blast white luster and nearly mark-free surfaces. #223914 \$4995.00
 1925 Norse-American. PCGS. MS-63. Thick Planchet. #140290 \$395.00
 1925 Norse-American. PCGS. MS-65. Thick Planchet. #121691 \$875.00
 1925 Stone Mountain. PCGS. MS-65. #218983 \$250.00
 1925 Lexington. PCGS. MS-66. #215317 \$450.00
 1925-S California. PCGS. MS-64. #135496 \$395.00
 1927 Vermont. PCGS. MS-66. #200652 \$715.00
 1928 Oregon Trail. NGC. MS-66. #138905 \$499.00
 1928 Hawaiian. PCGS. MS-64. A very attractive example of this scarce issue with creamy white luster and a sharp strike. A 'key' to the 48 piece Early Commemorative type set. #239975 \$3500.00
 1934 Texas. NGC. MS-66. #136797 \$295.00
 1934-D Oregon Trail. NGC. MS-66. #209240 \$450.00
 1935 Spanish Trail. NGC. MS-64. #128051 \$1295.00
 Lustrous white surfaces and a sharp strike.
 1935 Hudson. NGC. MS-66. Crisp mint luster with a light multi-color hue that clings to the periphery. Fantastic quality for this scarce, low mintage commem! . . . #205389 \$1275.00

- 1935 Hudson. PCGS. MS-64. . . #129468 \$799.00
 1935 Spanish Trail. PCGS. MS-64. Lustrous surfaces with a subtle gold hue. #248742 \$1400.00
 1935 Hudson. PCGS. MS-65. . . #209595 \$925.00
 1935 Spanish Trail. PCGS. MS-65. Crisp white luster with minimal marks. . #128074 \$1495.00
 1935 Arkansas. PCGS. MS-66. . #230870 \$350.00



- 1935 Spanish Trail. PCGS. MS-66. Well struck and nearly mark-free with vibrant satiny luster. #135583 \$1950.00
 1935-S San Diego. NGC. MS-66. #128391 \$225.00
 1936 Lynchburg. NGC. MS-65. #135283 \$259.00
 1936 Albany. NGC. MS-66. . . . #249989 \$450.00
 1936 Bridgeport. NGC. MS-66. #128056 \$349.00
 1936 Rhode Island. NGC. MS-66. #209753 \$235.00
 1936 York. NGC. MS-66. #240649 \$265.00
 1936 York. NGC. MS-66. #137557 \$225.00
 1936 Albany. NGC. MS-66+. . . #247044 \$495.00
 1936 Lynchburg. NGC. MS-66+. #249709 \$389.00
 1936 Albany. NGC. MS-67. . . . #138991 \$750.00
 1936 Delaware. NGC. MS-67. #246549 \$735.00
 1936 Norfolk. NGC. MS-67. . . #133274 \$525.00
 1936 York. NGC. MS-67. #139040 \$359.00
 1936 Albany. PCGS. MS-64. . . #121347 \$295.00
 1936 Gettysburg. PCGS. MS-65. #133334 \$950.00



- 1936 Gettysburg. PCGS. MS-67+. #248356 \$5450.00
 Fantastic quality with a rich silver-white luster patina accented by a tiny trace of gold at the rim.
 1936 Long Island. PCGS. MS-65. #133345 \$175.00
 1936 Robinson-Arkansas. PCGS. MS-66. #229579 \$275.00
 1936 York. PCGS. MS-66. #222800 \$225.00
 1936 Delaware. PCGS. MS-66+. #139099 \$399.00
 1936 Texas. PCGS. MS-67. . . . #229993 \$895.00
 1936 Wisconsin. PCGS. MS-67. #117033 \$675.00



1936 Cincinnati. PCGS. MS-67. Sharply struck with minimal marks and shimmering mint luster. Excellent eye appeal. #237597 \$275.00
1936-D San Diego. NGC. MS-65.

..... #210899 \$205.00
1936-D Columbia. NGC. MS-67.

..... #248822 \$525.00
1936-S Bay Bridge. NGC. Genuine.

UNC Detail - Cleaned. #246999 \$129.00
1936-S Texas. NGC. MS-65. . . #246918 \$275.00

1936-S Rhode Island. PCGS. MS-66.
..... #225813 \$275.00

1937 Arkansas. NGC. MS-66. . #230900 \$425.00
1937-D Texas. NGC. MS-65. . . #128054 \$269.00

1937-D Arkansas. NGC. MS-66.
..... #247149 \$450.00

1937-D Oregon Trail. NGC. MS-66.
..... #135144 \$350.00

1937-D Oregon Trail. NGC. MS-67.
..... #200662 \$519.00

1937-D Oregon Trail. PCGS. MS-64.
..... #206283 \$299.00

1937-D Texas. PCGS. MS-67. . #232927 \$695.00
1937-S Texas. NGC. MS-65. . . #135237 \$289.00



1937-S Arkansas. PCGS. MS-66+. Cream-white luster with touches of russet-gold along the periphery. Only 5,506 coins minted.

..... #249948 \$1175.00
1938 New Rochelle. NGC. MS-66.

..... #140303 \$439.00
1938 New Rochelle. PCGS. MS-65. #217463 \$399.00

1938 New Rochelle. PCGS. MS-65.
..... #135306 \$389.00

1938 New Rochelle. PCGS. MS-67.
..... #208258 \$995.00

1938-D Texas. NGC. MS-65. . . #229999 \$475.00
1938-D Boone. PCGS. MS-66. #218974 \$685.00

1938-S Boone. NGC. MS-66. . #247068 \$795.00
1938-S Oregon Trail. NGC. MS-67.

..... #137509 \$675.00
1938-S Boone. PCGS. MS-66. . #223033 \$795.00

1939 Oregon Trail. NGC. MS-66.
..... #221843 \$775.00

1939-S Arkansas. PCGS. MS-66.
..... #223646 \$850.00

Early Gold Commemoratives

1903 La. Purchase - McKinley \$1. NGC. MS-65. #133028 \$895.00

1903 La. Purchase - Jefferson \$1. PCGS. MS-65. #250016 \$1350.00
..... #250016 \$1350.00

1903 La. Purchase - McKinley \$1. PCGS. MS-66. Sharply struck with lustrous yellow-gold surfaces. #137175 \$1150.00

1903 La. Purchase - Jefferson \$1. PCGS. MS-67. Blazing luster with a blend of orange and sea-green highlight. Fantastic surfaces are nearly pristine. The strike is very sharp and the eye appeal is super! . . . #220997 \$2375.00



1904 Lewis and Clark \$1. PCGS. MS-65. Sharply struck with thick satiny luster over exceptionally nice surfaces. #221812 \$2750.00

1904 Lewis and Clark \$1. PCGS. MS-65. #247159 \$4750.00

1905 Lewis and Clark \$1. PCGS. Genuine. UNC Detail - Cleaned. #246327 \$595.00

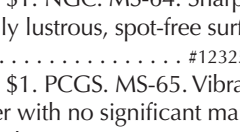
1916 McKinley \$1. NGC. MS-63. #126538 \$595.00

1916 McKinley \$1. PCGS. MS-64.
..... #205266 \$550.00

1917 McKinley \$1. PCGS. MS-67. Rich satiny luster and a sharp strike with nearly pristine surfaces. #135235 \$2150.00

1922 Grant \$1. NGC. MS-64. Sharply struck with highly lustrous, spot-free surfaces. #123250 \$1469.00

1922 Grant \$1. PCGS. MS-65. Vibrant orange-gold luster with no significant marks and a sharp strike. #222345 \$1750.00



1922 Grant \$1, Star. PCGS. MS-65. #220225 \$2575.00

1926 Sesquicentennial \$2 1/2. NGC. MS-63. #240944 \$695.00

One Dollar Gold Coins

1849-O. PCGS. MS-63. Rich satiny luster and a sharp strike. #229649 \$3695.00

1853-D. PCGS. AU-58. Bright flashy luster with the barest touch of 'rub'. Just 6,583 minted and this one is a hair away from being mint state! . . . #250005 \$6250.00

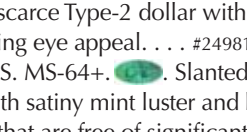


1852-O. NGC. MS-64. Well struck w/minimal marks and lustrous original surfaces. Only 2 have graded numerically finer at NGC!

..... #248501 \$8250.00
1854. PCGS. AU-55. Type-2. . . #234433 \$695.00

1855. PCGS. AU-58. #226248 \$850.00
1855. PCGS. MS-62+. Very well struck including all four digits of the date. The yellow-gold surfaces display wonderful unbroken luster. A scarce Type-2 dollar with outstanding eye appeal. . . #249812 \$3195.00

1856. PCGS. MS-64+. #249979 \$1195.00



1856-D. PCGS. AU-50. One of the great rarities in the gold dollar series with a mintage of just 1,460 coins. Most known examples are poorly struck with surface problems. This example is much nicer than most we've seen with sharp detail and pleasing surfaces that display ample yellow-gold luster. #242745 \$10750.00

1858. NGC. MS-62. #249718 \$750.00
1861. PCGS. MS-63. #203746 \$1095.00

1861. PCGS. MS-64. Satiny yellow-gold luster over very attractive, nearly mark-free surfaces. #225557 \$1450.00

1862. NGC. MS-61. #228119 \$575.00
1862. PCGS. MS-65. #245651 \$2650.00

1862. PCGS. MS-65. #249927 \$695.00
1873. PCGS. MS-62+. Open 3. #246906 \$725.00

1874. PCGS. MS-63. #246906 \$725.00
1874. PCGS. MS-64. #241244 \$1125.00

1874. PCGS. MS-64. #241244 \$1125.00

1874. PCGS. MS-64. #241244 \$1125.00

1874. PCGS. MS-64. #241244 \$1125.00

1874. PCGS. MS-64. #241244 \$1125.00

1874. PCGS. MS-64. #241244 \$1125.00

1874. PCGS. MS-64. #241244 \$1125.00

1874. PCGS. MS-64. #241244 \$1125.00

1874. PCGS. MS-64. #241244 \$1125.00

1874. PCGS. MS-64. #241244 \$1125.00

1874. PCGS. MS-64. #241244 \$1125.00

1874. PCGS. MS-64. #241244 \$1125.00

1874. PCGS. MS-64. #241244 \$1125.00

1874. PCGS. MS-64. #241244 \$1125.00

1874. PCGS. MS-64. #241244 \$1125.00

1874. PCGS. MS-64. #241244 \$1125.00

1874. PCGS. MS-64. #241244 \$1125.00



1881. PCGS. PR-64. DCAM. . Very flashy with heavy frost on the design and 'orange-peel' textured proof surfaces. Excellent eye appeal. Just 87 pieces minted.
..... #248486 \$10750.00
1887. PCGS. MS-64. . Deep orange-gold luster and a sharp strike with no significant abrasions. Outstanding for the grade with strong eye appeal. #229556 \$1295.00
1889. PCGS. MS-64. #225728 \$975.00
1889. PCGS. MS-66. . . . #243876 \$2150.00

Two 1/2 Dollar Gold Coins

1835. PCGS. AU-50. Solid detail & a pleasing lustrous example. #250017 \$1325.00
1836. PCGS. VF-35. Block 8. . . #249063 \$975.00



1842. NGC. AU-53. Very scarce w/a mintage of just 2,823 & just 50 to 60 known. This is a pleasing example with just light wear, original surfaces, and no significant marks.
..... #248423 \$7750.00
- 1843-D. PCGS. AU-53. Small D. Nearly uncirculated with much of the luster still evident. Scarce and very desirable with a mintage of just 36,209. . . . #249995 \$4575.00
- 1846-O. PCGS. MS-61. Original lustrous surfaces that display remarkably few marks for the grade! #242321 \$6995.00
1851. PCGS. MS-63+. Premium quality for the grade with bright flashy surfaces.
..... #248540 \$1350.00



- 1851-D. NGC. AU-53. A very scarce date with a mintage of 11,264 and infrequent appearances at auction or on the coin show circuit. This is an attractive example with solid detail and original lustrous surfaces.
..... #246813 \$5450.00
- 1852-O. PCGS. AU-58. Vibrant luster with just a touch of friction. A pleasing gold piece from this popular Southern mint.
..... #246966 \$2095.00
- 1854-O. PCGS. AU-53. Well struck yellow-gold surfaces with most luster still intact.
..... #222213 \$1095.00
1856. PCGS. MS-61. #215754 \$895.00

- 1866-S. NGC. AU-58. A scarce date with 38,900 minted and most the survivors are well worn. This well struck yellow-gold example offers pleasing luster and a clean look. #249774 \$3500.00



1867. PCGS. AU-58. Sharply struck with flashy orange-gold surfaces that show no sign of wear. Just 3,200 minted. Housed in an old green label holder. #243964 \$5995.00
1873. PCGS. AU-58. Closed 3. #249740 \$725.00
1897. PCGS. MS-66. Very flashy with rich satiny luster accented by a touch of orange-peel toning. The strike is sharp and there are no distracting marks. Just 29,768 minted.
..... #225149 \$2435.00
1898. PCGS. MS-65. . Outstanding for the grade with rich vibrant luster and no significant marks. Just 24,000 minted.
..... #227494 \$2450.00
1899. PCGS. MS-65. Sharply struck & nearly mark-free with rich satiny mint luster.
A modest 27,200 minted. . . #225122 \$1650.00
1907. NGC. MS-64. #229526 \$650.00
1908. PCGS. AU-50. #249961 \$489.00
1912. PCGS. MS-64. Beautiful rich satiny luster and a sharp strike. . . . #244373 \$3450.00
1913. PCGS. MS-63+. Brilliant and lustrous yellow-gold surfaces and a sharp strike.
..... #249808 \$1375.00

Three Dollar Gold Coins

1854. NGC. AU-55. A pleasing example of this first-year \$3 Princess. . . #134243 \$1795.00
- 1854-O. PCGS. AU-58. The only New Orleans 'Three' with a mintage of 24,000. This issue saw heavy circulation resulting in a low survival rate and very few nice coins. This is an exceptionally pleasing example with strong detail and bright lustrous surfaces. Just 5 coins have graded finer at PCGS and the eye appeal of this coin is probably superior to most of those! . #248434 \$26250.00



- 1855-S. NGC. AU-58. One of the rarest coins in the series with 6,000 minted and very few survivors. Akers states that this date had the fewest number of auction appearances, of any regular issue, in the 238 auctions he used for the survey in his book. This is an attractive example with lustrous surfaces

that have a faint rose tint and show just a touch of wear on the high points of the design. Just 3 examples have graded finer at NGC. #246986 \$21950.00

- 1855-S. PCGS. VF-35. A pleasing & problem-free example of this scarce date with original antique gold surfaces. One of the rarest coins in the series with 6,000 minted and very few survivors. #225995 \$2995.00
1856. PCGS. AU-53. #250064 \$1875.00
- 1856-S. PCGS. VG-8. Popular as one of only two dates struck in San Francisco.
..... #248656 \$1195.00
1859. PCGS. AU-53. Well detailed with lustrous antique gold surfaces. #249909 \$1995.00
1872. PCGS. AU-58. Well struck and very nearly mint state with flashy luster and semi proof-like original surfaces. Only 2,000 minted. #234383 \$7150.00



1878. NGC. MS-63. . Attractive orange-gold surfaces and well struck. The strong & flowing luster provides great eye appeal.
..... #249688 \$6250.00
1881. NGC. MS-61. In a series that is populated by low mintage dates, 1881 takes the prize for the lowest regular issue mintage at a miniscule 500 coins. This is a pleasing example with a strong strike & orange-gold proof-like surfaces that have a faint greenish hue. Minor tics define the grade, but none are heavy and the design features are undisturbed. A popular rarity and a nice coin for the grade! #240048 \$17950.00



1882. PCGS. MS-64+. . Extremely flashy with bright semi proof-like surfaces and lightly frosted design features. A beautiful example of this scarce date with no significant marks. One point of interest is that a single die was used for business strikes and it appears that the digit '2' was originally punched too high. Remnants of that 2 are seen above and under the primary 2.
..... #246925 \$16500.00

Five Dollar Gold Coins

1838. NGC. AU-53. Strong detail with attractive lustrous surfaces. . #250004 \$2500.00
1838. PCGS. MS-63. Very sharply struck yellow-gold surfaces with brilliant flowing

luster. The final 'P' mint in the Classic 'Five' series and difficult to find in mint state.

..... #249775 \$12950.00

1839-D. NGC. AU-53. From the first year of the series and the only year the mint-mark is on the obverse above the date. This is a very attractive coin from the tiny Dahlonega Mint. The strike is sharp and the surfaces are pleasing with no marks of significance. Only 18,939 minted. #249716 \$18750.00



1845-O. PCGS. AU-58. Flashy gold luster and a strong strike with a pleasing appearance and just the barest touch of 'rub'. 41,000 minted with most the survivors grading VF and XF. Just 10 coins have graded finer at PCGS..... #239383 \$13500.00

1847. NGC. AU-58. Lustrous yellow-gold surfaces with just a touch of 'rub'.
..... #131435 \$1295.00

1852. PCGS. MS-63+. Very flashy with strong radiant luster & a sharp strike. The surfaces are choice and devoid of heavy marks.
..... #242582 \$6295.00

1856. PCGS. MS-62. Well struck with lustrous yellow-gold surfaces. Minimally abraded and wonderful for the grade. Pre-Civil War 'Fives' are tough in mint state and this date is no exception. #249658 \$3650.00



1864. NGC. AU-50. Very scarce with 4,170 minted and an estimated 60 to 75 known. This is a pleasing, problem-free example.
..... #244332 \$17500.00

1869-S. NGC. AU-55. Lustrous surfaces with a touch of wear on only the high points. The strike is strong for this seldom-seen date which saw a modest mintage of just 31,000. Only 5 coins have been graded mint state at NGC and PCGS combined.
..... #230312 \$5495.00

1871-CC. PCGS. VF-20. From the second year of operation at the Carson City Mint with just 20,770 minted. This is an attractive example with yellow-gold surfaces and solid detail for the grade. . . #249965 \$6875.00

1894-O. NGC. AU-58. Nearly mint state with strong detail and no obvious signs of wear. Only 16,600 minted. #241252 \$1395.00

1894-O. NGC. MS-61. Bright lustrous surfaces and well struck. Only 16,600 minted.
..... #235658 \$2475.00

1897. PCGS. MS-64. Blazing luster and a very sharp strike. . . . #236276 \$1295.00

1901-S. PCGS. MS-66. Thick yellow-gold luster and a great strike with excellent eye appeal. #235195 \$3295.00

1902-S. PCGS. MS-66. Rich satiny luster over beautiful clean surfaces. #211356 \$2995.00



1908. PCGS. MS-66+. Satiny yellow-gold luster and a sharp strike with beautiful choice surfaces. Super quality from the final year of the series. #249917 \$5595.00

1909-D. PCGS. MS-64. Well struck with rich satiny luster and minimal marks.
..... #223987 \$1850.00

1910. PCGS. MS-63+. Rich lustrous original surfaces, a sharp strike, and very few marks. #239626 \$2750.00

1912-S. PCGS. AU-58. Well struck with bright lustrous surfaces. #248560 \$1450.00

1913. PCGS. MS-63. Well struck with satiny yellow-gold luster and strong eye appeal. #225966 \$2250.00

1915. NGC. MS-63. Bright yellow-gold luster and a sharp strike. #249862 \$1939.00

1915. PCGS. MS-64+. A beauty with strong yellow-gold luster and very clean surfaces. Totally original and well struck with great eye appeal! #249731 \$4250.00

Ten Dollar Gold Coins

1838. PCGS. AU-50. A very desirable example of this rare first-year \$10 Liberty. A mere 7,200 minted with fewer than 100 known survivors. Most are lackluster and severely abraded. This coin is exceptional with original light yellow-gold surfaces that retain mint luster. The strike is bold and the surfaces are choice without the heavy marks that plague this issue. #247086 \$16995.00



1843. NGC. AU-58. Very attractive and nearly mint state with bright lustrous surfaces that are smooth and devoid of significant marks. #249905 \$7500.00

1842. NGC. AU-55. Large Date. Dramatic reverse die breaks. #248352 \$3225.00

1845-O. NGC. AU-55. Sharp detail with lustrous yellow-gold surfaces. A scarce date with a modest mintage of 47,500.
..... #249906 \$5695.00

1847-O. NGC. AU-55. A pleasing early 'O' mint with nice lustrous surfaces.
..... #248505 \$2495.00

1851. PCGS. AU-50. A good choice for type collectors as a fairly robust 176,328 coins were minted. #236909 \$1875.00



1853-O. NGC. AU-55. Sharp detail with bright yellow-gold surfaces and minimal marks. A scarce date with a modest mintage of 51,000. #229555 \$4795.00

1854-S. NGC. AU-55. Well struck w/original lustrous surfaces. The first year for gold eagles at the San Francisco Mint.
..... #250002 \$3650.00

1855. PCGS. AU-53. Well struck and lustrous antique-gold surfaces. #239082 \$1750.00



1857. PCGS. AU-58. A pleasing & well struck yellow-gold example of this scarce date. Just 16,606 minted. #249949 \$6875.00

1862-S. PCGS. VF-20. Very nice for the grade with problem-free surfaces and a nice antique gold color. A very scarce date with 12,500 struck and just 60 to 80 known survivors. #249932 \$6500.00

1878-CC. NGC. AU-53. Attractive yellow-gold surfaces that exhibit ample remnant luster and a strong strike. The look is far cleaner than what is normally seen on early CC gold. Marks are few and minor with none of significance. The 1878-CC is among the rarest eagles from not only the Carson City Mint but also in the entire \$10 Liberty series. Of 3,244 pieces minted, only a scant 60-75 pieces are believed to still survive. Only 15 pieces have graded finer at NGC with the highest graded being a single MS-61 example. #238774 \$32500.00

- 1880-S. PCGS. MS-63. Well struck with choice original surfaces. Just 11 coins have graded finer at PCGS. #226348 \$2195.00
- 1882-S. PCGS. MS-62. A modest 132,000 minted & an underrated date in high grade. Just 22 examples have graded finer at PCGS and all but 2 of those are just a single point finer than this attractive coin. #249094 \$1650.00
- 1884-S. PCGS. MS-61. Sharply struck yellow-gold surfaces that are bright and lustrous. #245781 \$1535.00



- 1888-O. NGC. MS-63. Sharply struck with satiny luster over silky smooth surfaces that display minimal marks. Just 21,335 minted and tied for the finest graded at NGC. #239794 \$8995.00
- 1889-S. PCGS. MS-63+. Sharply struck with satiny yellow-gold luster. A modest 425,400 were minted. #250065 \$2095.00
- 1892-O. PCGS. MS-62. Well struck with original lustrous surfaces. #122084 \$2875.00
- 1894-O. NGC. MS-62. #233471 \$2565.00
- 1895-O. PCGS. MS-62. Lustrous with original yellow-gold surfaces and a sharp strike. #231027 \$2750.00
1899. NGC. MS-65+. Sharply struck with a rich luster cartwheel and very attractive surfaces. A great choice for a high quality type set. #245376 \$3995.00
- 1901-O. NGC. AU-58. Lustrous yellow-gold surfaces and a sharp strike. A popular New Orleans Mint issue with a mintage of only 72,041. #238301 \$1695.00
- 1901-S. PCGS. MS-65. Deep golden luster and a needle-sharp strike with beautiful satiny surfaces. A great choice for a Gem type set. #226941 \$2995.00



- 1901-S. PCGS. MS-66. Bright lustrous surfaces that are devoid of significant marks and are spot-free. The strike is razor sharp and the eye appeal is outstanding! #242584 \$4500.00
- 1903-O. PCGS. MS-63+. Rich satiny luster gives this popular New Orleans Mint 'Ten' excellent eye appeal. #248627 \$3450.00

- 1904-O. NGC. MS-62. Lustrous yellow-gold surfaces and a sharp strike. Very attractive for the grade. #236822 \$2125.00
- 1904-O. PCGS. MS-63. Rich satiny luster and a sharp strike with silky smooth surfaces. A great looking 'O' mint 'Ten'. #222466 \$2695.00
- 1906-D. PCGS. MS-64+. Brilliant yellow-gold surfaces and a sharp strike with strong eye appeal. #227829 \$2995.00
1907. NGC. AU-58. Indian. Popular first year of this issue and a 'no motto' type. Well struck and lustrous. #203733 \$1495.00



- 1908-N/M. NGC. MS-63. Well struck with yellow-gold luster and minimal abrasions. The 33,500 coin mintage is the second lowest for a regular issue in the series. #248445 \$6500.00
- 1908-S. PCGS. AU-58. A near mint state example of this scarce date. Just 59,850 minted. #247080 \$3495.00
- 1908-W/M. PCGS. MS-63. Crisp luster and a sharp strike. First year of the 'with motto' type. #223767 \$2625.00
- 1910-S. PCGS. MS-62. Well struck with pleasant mellow yellow-gold surfaces. Despite a relatively high mintage, quite elusive in any mint state grade. #222467 \$3450.00



- 1910-S. PCGS. MS-64. A lovely example of this better date with bright lustrous surfaces that are devoid of significant marks. Only 4 have graded numerically finer at PCGS. #231574 \$13995.00
1912. NGC. MS-64. Very attractive with bright flowing luster and a sharp strike. #244555 \$3250.00
- 1913-S. PCGS. MS-63. A low mintage 'key' date with just 66,000 minted. Most entered circulation as the average grade is one of the lowest in the series and high grade coins are truly rare. This is a lovely example with yellow-gold luster and choice surfaces that show just a few minor tics but nothing

- distracting from its' excellent eye appeal. #247133 \$20650.00
1915. NGC. MS-61. Sharply struck with brilliant and lustrous yellow-gold surfaces. #202609 \$1450.00
1926. PCGS. MS-65. Brilliant with lustrous yellow-gold surfaces and a sharp strike. #236866 \$3375.00
1932. PCGS. MS-65. Vibrant lemon-gold luster and a sharp strike. #229846 \$3375.00


Twenty Dollar Gold Coins



- 1851-O. PCGS. AU-53. New Orleans Mint 'Twenties' are scarce, but 1851 is the most available and thus a great choice for collectors seeking a single 'O' mint for their type sets. This is a well detailed example with a pleasing appearance and original lustrous surfaces. #249713 \$6875.00
1860. NGC. AU-53. Nice original lustrous surfaces. #246923 \$2995.00
- 1865-S. PCGS. AU-58. Well struck & lustrous with just a touch of friction. Very nearly mint state. #248499 \$5295.00
- 1868-S. PCGS. AU-55. Strong detail and original lustrous surfaces. #248405 \$4095.00
- 1874-S. PCGS. MS-60. Well struck and lustrous. #248484 \$4250.00




- 1882-S. PCGS. MS-62. Radiate luster and a sharp strike. #248535 \$4395.00
- 1883-S. PCGS. MS-62. Brilliant and lustrous with a sharp strike. Surfaces exhibit minor abrasions that are of no significance. The eye appeal is strong for the grade. #228584 \$3150.00
- 1887-S. PCGS. MS-62. Nice for the grade with flashy yellow-gold luster. #229011 \$4250.00
- 1892-S. NGC. MS-62. An attractive example with brilliant yellow-gold luster and a clean look for the grade. #130429 \$2995.00

- 1892-S. PCGS. MS-63.  Lustrous yellow-gold surfaces and a sharp strike. Marks are minor and minimal for the grade. #249994 \$4500.00
1894. NGC. MS-63. Well struck with vibrant mint luster. #247017 \$3750.00
- 1899-S. NGC. MS-62. Brilliant satiny luster and a sharp strike. #124921 \$2595.00
- 1903-S. NGC. MS-62. Sharply struck with brilliant and lustrous yellow-gold surfaces. #244569 \$2595.00
- 1903-S. PCGS. MS-63. Well struck with rich satiny luster. #134922 \$3895.00
1904. NGC. MS-63. Brilliant lustrous surfaces and a sharp strike. #207812 \$2395.00
1904. PCGS. MS-65. Rich lustrous surfaces and a sharp strike. A great choice for a quality type set. #138501 \$3895.00



1904. PCGS. MS-66. Fantastic quality with a sharp strike and thick mint luster over nearly flawless surfaces. #140246 \$9250.00
1907. NGC. MS-66. St. Gaudens. A beautiful example of this first year 'Saint' with rich satiny orange-gold luster and very clean surfaces. #245990 \$8995.00



1907. PCGS. MS-61. St. Gaudens. High Relief, Roman Numerals, Wire Edge. Lustrous satiny surfaces & a strong strike. The minimal marks that define the grade are well positioned as to not distract from the excellent eye appeal. #226482 \$17995.00
1907. PCGS. MS-63. St. Gaudens. Popular first year of issue with the regular 'Arabic' numerals for the date. #126710 \$2995.00
- 1909/8. PCGS. MS-64. The only overdate in the series with the 8 showing clearly under the second 9 in the date. #246029 \$12500.00
- 1911-D. PCGS. MS-65.  Rich satiny luster and a sharp strike with exceptionally clean surfaces. #226442 \$5250.00
- 1922-S. PCGS. MS-63. Nearly the entire mintage was held at the Treasury & melted

after 1933. A small quantity made it to European banks and account for the coins available to collectors today. #123219 \$5095.00

1924-D. PCGS. MS-63. Just over 3 million minted but, like many late date 'Saints', almost all were melted after 1933 when FDR made gold ownership illegal. Small hoards were found in Europe in the 1960's which account for almost all the known coins today. This example is attractive and exhibits rich yellow-gold luster and a sharp strike. #127681 \$8950.00

1924-D. PCGS. MS-64. Vibrant orange-gold luster and beautiful surfaces that are exceptionally clean. Just over 3 million minted but most were held at the mint and subsequently melted after FDR outlawed gold ownership in 1933. #231602 \$16500.00

U.S. Pattern



1836. Gold Dollar. PCGS. PR-63. J-67. R-5. Designed by Christian Gobrecht. The obverse shows a Liberty Cap surrounded by rays of glory and the reverse has the denomination 1 D. inside a circular palm frond. The date is below & UNITED STATES OF AMERICA is above. Struck in .900 fine gold with a plain edge. #248711 \$18750.00

Private Mint Gold



- (1842-50) A. Bechtler \$1. NGC. MS-63. Carolina Gold. 27G, 21C, Plain Edge. Christopher and Augustus Bechtler minted gold coinage in Rutherford County, NC from 1831 to 1852. Rutherford County and other areas of the Piedmont region of North Carolina and Georgia were primary sources of gold until the California gold rush. This example is boldly struck with semi proof-like surfaces and deep reddish-gold luster. Exceptionally flashy with fantastic eye appeal. #236119 \$8750.00
1853. NGC. MS-62+. California Fractional Gold. BG-530. One Dollar, Octagonal. Liberty Head. R-2. Lustrous yellow-gold surfaces and a sharp strike. #249982 \$1150.00
1853. PCGS. AU-58. California Fractional Gold. BG-302. Fifty Cent. Octagonal Liberty Head. R-4. "Peacock" reverse. One of the most distinctive of all California Gold Coins. The reverse shows an eagle perched on an arrow with his tail below and surrounded by 'glory rays'. The long-necked eagle

- resembles a Peacock, thus the nickname. #235252 \$1995.00
1854. NGC. MS-62. PL. California Fractional Gold. BG-510. One Dollar. Octagonal Liberty Head. Low Rarity-5. A Frontier, Devicry issue with the FD initial on the reverse. Proof-like surfaces give this bright lustrous coin a generous amount of flash! #249845 \$1595.00
1854. NGC. MS-64. California Fractional Gold. #250063 \$1500.00
1854. PCGS. AU-55. California Fractional Gold. BG-507. One Dollar. Octagonal Liberty Head. High R-6. A challenging variety with lustrous yellow-gold surfaces. Well struck except for some weakness in the date. #250000 \$1750.00
1855. PCGS. AU-58. California Fractional Gold. BG-405. Fifty Cent. Round Liberty Head. #249923 \$450.00



- 1855/4. NGC. MS-65. California Fractional Gold. BG-511. One Dollar. Octagonal Liberty Head. High Rarity-4. Another scarce Frontier, Devicry product with their FD initials at the bottom of the reverse. The 5/4 is really nothing more than a blob. This lovely example is the single finest graded at either service. #249844 \$2500.00



1860. NGC. MS-65. PL. California Fractional Gold. BG-1102. One Dollar. Octagonal Liberty Head. Rarity-4. Crudely struck by Frontier, Devicry and Co. in San Francisco. The surfaces are a bright yellow-gold and very flashy. #249843 \$3250.00
1866. NGC. MS-64+. California Fractional Gold. BG-737. 25¢. Liberty Head Octagonal. R-5. Flashy yellow-gold surfaces and a sharp strike. #250037 \$1250.00
1870. NGC. AU-58. California Fractional Gold. BG-1205. Round Dollar. Goofy Head. High R-4. Nearly new with a sharp strike and flashy surfaces. #249870 \$1689.00



1870. NGC. MS-62. California Fractional Gold. BG-1108. One Dollar. Octagonal Liberty Head. Rarity-7, just 8 to 12 known. Lustrous although crudely struck from a buckled reverse die. #249840 \$3250.00

1870. NGC. MS-62. PL. California Fractional Gold. BG-1205. One Dollar. Round Liberty Head. High R-4. Sharply struck and flashy 'Goofy Head' variety. #241390 \$2595.00



1870. NGC. MS-66. PL. California Fractional Gold. BG-867. 25¢. Round Liberty Head. R-4. A well struck 'Goofy Head' variety with super flashy yellow-gold surfaces and a sharp strike. #250006 \$2095.00

1870. PCGS. MS-67. California Fractional Gold. BG-808. Twenty-Five Cents. Round Liberty Head. R-3. Virtually pristine fields with sharply detailed design elements and strong yellow-gold luster. Excellent eye appeal! #244756 \$1450.00

1871. NGC. MS-63. PL. California Fractional Gold. BG-860. Quarter Dollar. Round Liberty Head. Low R-6. #249721 \$875.00

1871. NGC. MS-65. California Fractional Gold. BG-864. Quarter Dollar. Round Liberty Head. #250019 \$995.00

1871. NGC. MS-65. PL. California Fractional Gold. BG-860. Quarter Dollar. Octagonal Liberty Head. Low R-6. Super flashy and well struck. #249657 \$1195.00

1871. NGC. MS-65. PL. California Fractional Gold. BG-924. Half Dollar. Octagonal Liberty Head. R-3. Super flashy and well struck. #249810 \$1095.00

1871. NGC. MS-65. PL. California Fractional Gold. BG-813. Quarter Dollar. Round Liberty Head. #250009 \$695.00

1871. NGC. MS-65+. California Fractional Gold. BG-912. Fifty Cent. Octagonal Liberty Head. #249992 \$895.00

1871. PCGS. MS-63. California Fractional Gold. BG-1025. Fifty Cent. Round Liberty Head. #242542 \$695.00

1872. NGC. MS-63. California Fractional Gold. BG-722. Washington Head. Quarter Dollar. Octagonal. Low R-4. Extremely popular as the obverse shows a portrait of George Washington. This example is very well struck with lustrous original yellow-gold surfaces. #249829 \$1295.00



1872. NGC. MS-65. California Fractional Gold. BG-818. Washington Head. Quarter Dollar. Round. Low R-4. Extremely popular as the obverse shows a portrait of George Washington. This example is very well struck with very flashy original yellow-gold surfaces. #249705 \$2195.00

1872/1. NGC. MS-66. PL. California Fractional Gold. BG-790. Quarter Dollar. Octagonal. Indian Head. R-3. A well struck, super flashy Gem. #249976 \$1250.00

1875. NGC. MS-65. PL. California Fractional Gold. BG-877. 25¢. Indian Head Round. High R-5. Flashy orange surfaces with touches of violet tint. #250036 \$1250.00

1875. NGC. MS-66. DMPL. California Fractional Gold. BG-878. Quarter Dollar. Round. Indian Head. R-3. Fantastic quality with very deep mirrored fields and a great strike. #223331 \$1195.00



1875. NGC. MS-66. PL. California Fractional Gold. BG-1125. One Dollar. Octagonal Indian Head. Rarity-5. Incredible quality with a sharp strike and frosted devices. The fields are proof-like and very flashy. Tied with a single PCGS graded coin as the finest of this scarce variety. #249842 \$3450.00

1876. NGC. MS-66. PL. California Fractional Gold. BG-786. 25¢. Octagonal Indian Head. Low R-6. Sharply struck and flashy mirrored surfaces. #249996 \$1450.00

1876. PCGS. MS-63. California Fractional Gold. BG-786. Quarter Dollar. Round Indian Head. #249663 \$795.00

1880/70. PCGS. MS-64. PL. California Fractional Gold. BG-1067. Fifty Cent. Round Indian Head. Low R-4. #249825 \$995.00

1881. NGC. MS-67. DMPL. California Fractional Gold. BG-887. Quarter Dollar. Round Indian Head. R-3. Super mirrors and great eye appeal! #249689 \$1695.00

Private Token



1861 CSA Scott Restrike Half Dollar. PCGS. MS-62. Just 4 original CSA half dollars were struck. NYC coin dealer J.W. Scott purchased the dies in 1879. He also purchased 500 1861 Seated Halves (allegedly O-mints), planed off the design of the Federal reverse and struck the CSA reverse. This is a particularly nice coin for the grade. The CSA side is well struck with beautiful problem-free surfaces that are original with light silver-gray toning. The 1861 obverse, which often comes poorly defined, is sharp including a bold LIBERTY. #248549 \$13250.00

Hawaiian Coins

1847. Cent. PCGS. Genuine. AU Detail-Environmental Damage. #233148 \$495.00



1883. Half Dollar. PCGS. MS-64. Well struck and original with vibrant mint luster and attractive light toning. #226768 \$2795.00

1883. Half Dollar. PCGS. MS-65+. Rich lilac luster with traces of blue and gold tint dominates the obverse. The reverse tends more towards an overall blend of deep lilac-white and has equally impressive eye appeal. #249860 \$9500.00

Error Coins

2002. NGC. MS-67. Quarter. Wrong Planchet. 2002 Tennessee Quarter struck on a nickel planchet. #241674 \$1750.00



2002. NGC. MS-68. Quarter. Wrong Planchet. 2002 Tennessee Quarter struck on a nickel planchet. #242749 \$1995.00

Foreign Silver Coins

1926. Canada. PCGS. AU-58. 5 Cent. Far 6. #249934 \$995.00
1927. China. NGC. MS-61. Dollar. L&M-49 Memento. 6 Pointed Stars. #244686 \$395.00

Greek Coins

c. 95-75 BC. Seleucid Kingdom. Silver Tetradrachm. NGC. Philip I Philadelphos. Extra Fine. Philip "The Brother-Loving" defeated his brother in battle, and was soon defeated by Tigranes of Armenia. Obverse, diademed head right. Reverse, Zeus seated, holding Nike and scepter. Wonderful style, well centered and struck. #205102 \$395.00
275-250 BC. Boeotia (Federal). Silver Hemidrachm. NGC. Shield-Khantaros. NGC Choice Fine. Shield and Khantaros. #248199 \$175.00
4th Century BC. Boeotia (Federal). Silver Hemidrachm. NGC. Shield-Khantaros. NGC Choice Fine. Good strike and clean surfaces. #248161 \$139.00

Large Size Currency



1862. \$1. F-16c. PCGS. Ch AU-55. LTN. A beautiful 'Chase' that exhibits full well centered borders and sharp corners. Black, green, and red inks are all vivid and the paper is bright. Great eye appeal! #220328 \$2499.00
1862. \$1. F-16c. PCGS. VF-30. LTN. Portrait of Samuel P. Chase. The original greenback design. A solid note with strong ink and light even wear. #249847 \$1275.00
1878. \$10. F-99. PMG. VF-30. LTN. The only 1878 variety in the 'Jackass' type, this well centered example exhibits strong color and pleasing paper. #249722 \$3150.00



1879. \$10. F-214. PMG. AU-50. Refunding Certificate. An attractive example of this unusual interest bearing obligation currency which found popularity with the general public until the interest stopped in 1907. They werstrong color and even wear. The paper has been designated as 'PPQ', and is seldom assigned at this grade level..... #249723 \$975.00



1880. \$10. F-112. PMG. VF-30. LTN. A scarcer 'Jackass' note with only 79 known according to Track & Price in all grades. This example presents itself quite well for the grade with plenty of color, solid paper, and a problem-free appearance..... #249792 \$1395.00
1880. \$20. F-147. PMG. VF-20. LTN. Well centered & solid for the grade. #136000 \$750.00
1880. \$5. F-74. PCGS. Ch AU-58. LTN. A nearly new note with full margins and strong color. #118981 \$1350.00

1882. \$500. F-1216b. PCGS. VF-25. PPQ. Gold Cert. A striking portrait of Abraham Lincoln rests upon premium paper that still retains its originality and quite a bit of its brightness. Wear is light, gentle, and well in line for the grade. The black color is still rich, the red seal is still strong, the blue serial numbers still offer pizzazz, and the orange ink on both sides remains fresh and unoxidized. Margins are well framed and more than ample. As with all varieties in this issue, this example is very elusive with only 55 known in all grades, many of which would only rate as 'details' pieces. This premium example would be the highlight of many significant collections. #247232 \$3995.00

1891. \$1. F-350. PMG. VF-20. Treasury Note. Strong color, even wear, & some remaining brightness. #249872 \$469.00



1891. \$1. F-351. PCGS. Gem-65. PPQ. Treasury Note. Portrait of Edwin Stanton, Secretary of War under Lincoln. A well centered bright note with strong color, original paper, and plenty of eye appeal. #246892 \$2395.00
1891. \$1. F-351. PCGS. VF-30. PPQ. Treasury Note. Well centered with strong color and premium paper. #247059 \$675.00
1891. \$1. F-352. PMG. Ch XF-45. Treasury Note. Portrait of Edward Stanton, Secretary of War under Lincoln. Well margined with sharp corners, strong color, and bright paper. #245346 \$950.00
1891. \$1. F-352. PMG. VF-25. Treasury Note. Well centered with strong color and plenty of remaining brightness. #249696 \$550.00
1891. \$2. F-245. PMG. Ch AU-58. EPQ. Silver Cert. Portrait of William Windom. A beautiful note that exhibits strong color and bright premium paper. Margins are wide and eye appeal is excellent..... #247029 \$5450.00
1891. \$2. F-245. PMG. VF-25. EPQ. Silver Cert. Well centered wide margins frame wonderful color. The premium paper offers plenty of eye appeal. #248579 \$1695.00
1891. \$2. F-245. PMG. VF-30. Silver Cert. Portrait of William Windom. Margins are more than ample & the paper is well inked. Wear is light and even..... #243659 \$1795.00
1896. \$1. F-225. PMG. Ch VF-35. Silver Cert. A well margined 'Educational' that exhibits strong color and bright paper. Typical wallet folds prevent a higher grade. #229781 \$1235.00



1896. \$1. F-224. PMG. Ch Unc-63. Silver Cert. Educational Series 'History Instructing Youth'. Comment: Minor Foreign Substance. A beautiful note with bright paper & strong color. Very well centered for the grade and wonderful eye appeal. Trivial residue at the top is minor and easy to overlook. #248474 \$2995.00



1896. \$2. F-248. PMG. VF-25. Silver Cert. Educational Series. Science Presenting Steam and Electricity to Commerce and Manufacture. Robert Fulton and Samuel Morse are featured on the back. A well centered note with pleasing color, solid paper, and light even wear. #117280 \$2550.00
1899. \$1. F-226a. PMG. Gem-66. EPQ. Silver Cert. An early in the run 'black eagle' with beautiful black and green ink and brilliant white paper. Well embossed blue serial numbers and seal complete a great look! #249991 \$1950.00



1899. \$1. F-228. PCGS. Superb-67. PPQ. Silver Cert. A beautiful 'Black Eagle' that exhibits rich inks, bright white paper, and nice embossing. Eye appeal is excellent! #232541 \$2650.00
1899. \$1. F-229a. PCGS. VF-35. Silver Cert. Black Eagle. A very scarce Vernon/McClung note with the date at the right end. Track & Price lists only 310 known in all grades. An attractive note with strong color and a bright appearance. #249988 \$935.00
1899. \$1. F-236. PCGS. Gem-65. PPQ. Silver Cert. A beautiful note with bold inks, bright premium paper, and nice embossing. #249806 \$1250.00
1899. \$5. F-280. PMG. VF-30. Silver Cert. Popular in any grade. A pleasing well

centered note that exhibits strong color and only light wear. #246874 \$2095.00
 1901. \$10. F-121m. PMG. VF-25. LTN. Mule. John Burke Back Plate #337. Ample margins surround strong color and even wear. #247033 \$1995.00



1907. \$10. F-1172. PCGS. XF-45. PPQ. Gold Cert. Portrait of Michael Hillegas. A lovely note for the grade with vivid inks, bright premium paper, and nice margins. Wonderful eye appeal! . . . #232529 \$1050.00
 1907. \$5. F-91. PCGS. Ch New-63. PPQ. LTN. Woodchopper. A beautiful type note with strong ink color and bright paper with a fresh appearance. The 'PPQ' is well deserved. #238681 \$995.00
 1907. \$5. F-91. PMG. XF-40. EPQ. LTN. PCBLIC Error. A lovely note with vivid color and premium paper. #122510 \$539.00
 1914. \$10. F-905. PMG. XF-40. EPQ. FRN. Boston District. Bright with strong color and plenty of eye appeal. A popular Burke/Glass signature combination. #249877 \$329.00
 1914. \$10. F-906. PMG. Ch VF-35. FRN. Boston District. Bright with strong color and plenty of eye appeal. . . . #248674 \$279.00



1914. \$100. F-1074b. PMG. VF-30. FRN. Philadelphia District. Red Seal. An attractive 5 digit high denomination red seal. Four full margins surround strong color and paper with plenty of remaining brightness. All red seal \$100 notes are very scarce & desirable. Track & Price lists only 27 notes of this Friedberg # in all grades. . . #246775 \$9450.00
 1914. \$20. F-966. PCGS. XF-40. FRN. Boston District. A less common signature combination that faces up nicely. #249950 \$495.00
 1914. \$20. F-990. PCGS. Ch AU-55. PPQ. FRN. Chicago District. Nearly new with strong color, bright original paper, and nice embossing. #249753 \$689.00
 1914. \$5. F-834b. PMG. XF-40. EPQ. FRN. Philadelphia District. A tougher well margined red seal issue that displays strong color and original paper. . . #244610 \$1395.00

1914. \$50. F-1030. PMG. VF-25. FRN. New York District. Well centered with nice color and even wear. . . #247158 \$595.00
 1917 *. \$2. F-60*. PCGS. VF-30. LTN. Star Note. A pleasing replacement note with strong color and even wear. . . #249789 \$489.00
 1917. \$1. F-36. PCGS. XF-40. LTN. Well centered and a pleasing appearance. #247093 \$299.00
 1917. \$1. F-36. PMG. Ch AU-58. EPQ. LTN. Well centered with premium paper and a bright appearance. #235820 \$410.00
 1917. \$1. F-36. PMG. Ch Unc-64. EPQ. LTN. Well centered with strong color and bright premium paper. #249807 \$625.00
 1917. \$1. F-37. PCGS. Gem-65. PPQ. LTN. A well centered note that exhibits strong color and premium paper. . . #245589 \$975.00



1917. \$1. F-37. PMG. Gem-66. EPQ. LTN. Bright and fresh with strong ink and premium paper. #249831 \$1495.00
 1917. \$1. F-38m. PMG. XF-40. EPQ. LTN. Mule. John Burke Back Plate #2070. A bright note with strong color. . . . #243315 \$315.00
 1917. \$1. F-39. PCGS. Gem-66. PPQ. LTN. A note with strong ink and bright original paper. Plenty of eye appeal. #246970 \$1295.00
 1917. \$1. F-39. PMG. AU-55. EPQ. LTN. A nearly new note with strong ink and bright original paper. #233536 \$409.00
 1917. \$1. F-39. PMG. Ch Unc-64. LTN. Well centered with strong ink and a bright appearance. #200204 \$550.00
 1917. \$1. F-39. PMG. Gem-65. EPQ. LTN. Well centered with strong color & a bright appearance. #244725 \$950.00
 1917. \$1. F-39. PMG. XF-40. EPQ. LTN. Premium paper with strong color and a bright appearance. #244887 \$315.00



1917. \$2. F-57. PCGS. Gem-66. PPQ. LTN. An attractive 'Gem' with strong inks, well balanced margins, and bright premium paper. #250057 \$1595.00
 1917. \$2. F-60. PMG. AU-53. EPQ. LTN. A bright note with strong color & premium paper. #246013 \$495.00

1917. \$2. F-60. PMG. Ch Unc-64. EPQ. LTN. A well centered type note with strong color and bright premium paper. . . #200203 \$799.00
 1918. \$1. F-712. PMG. Ch AU-58. EPQ. FRBN. New York District. A well centered example with rich color, bright premium paper, and nice embossing. . . #249832 \$469.00
 1918. \$1. F-713. PCGS. VF-30. FRBN. New York District. An attractive note that exhibits strong color, plenty of brightness, and nice embossing. #247271 \$249.00
 1918. \$1. F-715. PMG. AU-55. EPQ. FRBN. Philadelphia District. A wonderful example that exhibits strong color, full brightness, and embossing that stands out. Great eye appeal! #244805 \$449.00
 1918. \$1. F-717. PMG. Ch Unc-64. EPQ. FRBN. Philadelphia District. An attractive near 'Gem' that exhibits strong color and bright paper. #245103 \$775.00
 1918. \$1. F-717. PMG. Ch VF-35. EPQ. FRBN. Philadelphia District. A well centered note with strong color and nice embossing. Premium paper still shows plenty of brightness and some crispness. . . #247031 \$310.00
 1918. \$1. F-718. PCGS. AU-50. FRBN. Cleveland District. Well centered with a bright appearance and nice embossing. #247016 \$399.00
 1918. \$1. F-729. PMG. AU-53. EPQ. FRBN. Chicago District. Well centered with vivid color, bright premium paper, and nice embossing. #249788 \$469.00
 1918. \$2. F-754. PCGS. Very Ch-64. FRBN. Philadelphia District. A popular 'Battleship' note with great color and bright paper. #249833 \$3450.00



1918. \$2. F-758. PMG. XF-40. FRBN. Cleveland District. A scarcer 'Battleship' with strong ink and bright paper. Track and Price lists only 98 known in all grades. #249849 \$1450.00



1922. \$10. F-1173. PCGS. Very Ch-64. PPQ. Gold Cert. Portrait of Michael Hillegas. A bright premium note with strong inks and crisp paper. #129749 \$2495.00

1923. \$1. F-239. PMG. Gem-65. EPQ. Silver Cert. The scarce issue with signatures of Woods/Tate. This example exhibits strong color, bright premium paper, & embossing that stands out. #249714 \$1175.00
1923. \$1. F-40. PMG. Ch AU-58. LTN. Strong color and nearly new. #231213 \$725.00
1923. \$1. F-40. PMG. Ch VF-35. LTN. Red Seal. Strong color rests upon paper with plenty of remaining brightness. Embossing is still nice. #242838 \$469.00

Small Size Currency



1928. \$1. F-1500. PCGS. Gem-66. PPQ. Legal Tender Note. Red Seal. A note with rich color, nice embossing, and fresh paper. #219222 \$895.00
1928. \$1. F-1500. PMG. Ch Unc-63. EPQ. Legal Tender Note. An attractive note w/vivid color & bright original paper. #243389 \$495.00
1928. \$2. F-1501. PMG. Gem-66. EPQ. Legal Tender Note. Pack fresh and great eye appeal! #249785 \$395.00
1928. \$20. F-2050-L. PMG. Gem-66. EPQ. Federal Reserve Note. San Francisco District. An attractive 'Gold on Demand' note that exhibits vivid inks and bright paper. #241095 \$595.00
1928. \$5. F-1525. PMG. Gem-66. EPQ. Legal Tender Note. An attractive note that exhibits bold color and bright paper. #250001 \$325.00



- 1928*. \$5. F-1950-K*. PMG. Ch VF-35. Federal Reserve Note. Dallas District. Star Note. A pleasing 'Gold on Demand' star note with strong color and a bright look. Very scarce with only 13 known stars in the census. #242841 \$995.00
- 1928-A. \$1. F-1601. PMG. Gem-66. EPQ. Silver Certificate. Pack fresh with deep color, nice margins, and wonderful embossing. Great eye appeal! #246850 \$239.00
- 1928-A. \$5. F-1951-D. PMG. Gem-65. EPQ. Federal Reserve Note. Cleveland District. An attractive 'Gold on Demand' note with strong color and bright paper. #242884 \$450.00

- 1928-B. \$20. F-2052-G. PMG. Gem-65. EPQ. Federal Reserve Note. Chicago District. Light Green Seal. Pack fresh and great eye appeal. #245204 \$325.00
- 1928-C. \$10. F-2003-B. PMG. Ch Unc-64. EPQ. Federal Reserve Note. New York Dist. Light Green Seal. Pack fresh. #245229 \$495.00
- 1928-D. \$1. F-1604. PMG. Gem-65. EPQ. Silver Certificate. A scarce issue with vivid color and bright premium paper. #249734 \$585.00



- 1928-E. \$1. F-1605. PMG. Ch AU-58. Silver Certificate. Virtually new with vivid color and bright paper. #249943 \$1495.00
- 1928-E*. \$5. F-1530*. PCGS. XF-45. PPQ. Legal Tender Note. Star Note. Well centered with vivid color and premium paper. #249986 \$325.00
- 1928-F*. \$5. F-1531*. PMG. Gem-65. EPQ. Legal Tender Note. Star Note. Wide variety. Pack fresh with great eye appeal! #249220 \$589.00
- 1928-G. \$2. F-1508. PMG. Superb-67. EPQ. Legal Tender Note. An attractive blend of strong color and premium paper. #213434 \$395.00
- 1929*. \$5. F-1850-D*. PMG. XF-40. EPQ. Federal Reserve Bank Note. Cleveland District. Star Note. An attractive issue with strong color, paper with plenty of crispness still remaining, and very well centered. #242671 \$750.00
1934. \$10. F-2005-F. PCGS. Gem-66. PPQ. Federal Reserve Note. Atlanta District. Dark Green Seal. Pack fresh! #248525 \$615.00
1934. \$5. F-1956-Em. PMG. Gem-65. EPQ. Federal Reserve Note. Mule. Dark Green Seal. Pack fresh. #247092 \$229.00



- 1934-A. \$1000. F-2212-D. PMG. Ch VF-35. Federal Reserve Note. Cleveland District. A well centered mid grade example that displays good color and light even wear. #247219 \$4595.00
- 1934-A. \$20. F-2305. PCGS. AU-53. Hawaii. Well centered with strong color and nearly new. #250033 \$410.00

- 1934-A. \$20. F-2305. PMG. AU-55. Hawaii. Nearly new with balanced margins and strong color. #250003 \$475.00
- 1934-A. \$5. F-1651. PMG. Superb-67. EPQ. Silver Certificate. A lovely blend of deep inks and bright premium paper. #249735 \$439.00
- 1934-B. \$5. F-1958-G. PMG. Gem-66. EPQ. Federal Reserve Note. Chicago District. Pack fresh. #247085 \$349.00
- 1934-D. \$5. F-1654. PMG. Superb-67. EPQ. Silver Cert. Narrow Variety. #249736 \$349.00
- 1935-A. \$1. F-1609. PMG. Ch Unc-64. Silver Certificate. "R" Experimental. A desirable experimental note with plenty of eye appeal. #245801 \$525.00
- 1935-A. \$1. F-1610. PMG. Gem-66. EPQ. Silver Certificate. 'S' Experimental Issue. An attractive note with premium paper and strong color. #249983 \$1129.00
- 1935-A. \$1. F-2306. PMG. Gem-65. EPQ. North Africa. Well centered with vivid color and a fresh appearance. #238148 \$425.00
1953. \$10. F-1706. PCGS. Gem-66. PPQ. Silver Certificate. Pack fresh. #242839 \$299.00
- 1953*. \$10. F-1706*. PMG. Ch Unc-64. EPQ. Silver Certificate. Star Note. A bright appearance & strong color. #250053 \$510.00

National Currency



1865. \$1. PMG. Ch F-15. PA. Reading. Charter 696. Farmers National Bank of Reading. F-380a. Original. An attractive note from an issue often found with faults. The color is still strong and the paper just shows honest wear. #240588 \$1295.00



1875. \$5. PMG. Ch VF-35. NJ. Salem. Charter 1326. Salem National Banking Company. F-402. 1875 Series. An attractive note just shy of the next grade level. It exhibits great color, sharp signatures, and minimal wear. Four margins capture the back while the front is just a little shy. A rare 1875 series issue with only 1 other 1875 known, also a 'Five', according to Track and Price. Plenty of eye appeal. #240851 \$3750.00



1882. \$5. PMG. VG-10. MI. St. Louis. Charter 3239. First Nat'l Bank of St. Louis. F-467. Brown Back. A rare issue from little known St. Louis bank. Only 2 large are known on the bank. The other note, also a \$5 brown back, displays the serial #1 which takes it into another category. It sold at auction back in 2007 for \$39,100! This example, exhibits more than ample margins, solid paper, pen signatures, and even wear. A real prize for a Michigan or 'misplaced town' specialist. #243146 \$4500.00



1902. \$10. PMG. VF-25. PA. Swarthmore. Charter 7193. Swarthmore National Bank. F-624. Plain Back. A tough note as a large size with a total of 7 large known under 2 titles. This first title note shows 5 large known according to Track & Price. A well margined note with good color and pleasing paper. #242641 \$1795.00
1902. \$10. PMG. VF-30. CO. Central City. Charter 2129. First National Bank of Central City. F-630. A scarce western bank known for its territorials. This example, a tough to find plain back on the bank, exhibits full margins, sharp signatures, and is solid for the grade. #240722 \$1495.00



1902. \$10. PMG. VF-30. KS. Downs. Charter 11318. Downs National Bank, Kansas. F-632. Plain Back. #236067 \$2750.00
1902. \$10. PMG. VF-30. OK. Mounds. Charter 6263. First National Bank of Mounds. F-626. Plain Back. A total of 8 large notes 0 small notes known on the bank according to Track & Price. #236126 \$1750.00
1902. \$10. PMG. VF-30. SC. Chester. Charter 8471. National Exchange Bank of Chester. F-626. Plain Back. A bright note with

strong color and plenty of eye appeal. #243050 \$550.00
1902. \$20. PMG. Ch VF-35. EPQ. TX. Groveton. Charter 6329. First National Bank of Groveton. F-650. Plain Back. A scarce Trinity County bank that exhibits color that is still vibrant, original paper with strong eye appeal, and stand out embossing. #242707 \$1195.00



1902. \$20. PMG. Ch VF-35. TX. Groveton. Charter 6329. First National Bank of Groveton. F-650. Plain Back. A scarce Trinity County bank that exhibits strong color, bright paper, and nice embossing. #242790 \$1150.00
1902. \$5. PMG. VF-20. PA. East Conemaugh. Charter 6979. First National Bank of East Conemaugh. F-598. Plain Back. A scarce large only Cambria County bank with only 10 large known according to Track & Price. Problem free w/even wear. #242865 \$495.00
1902. \$5. PMG. VF-30. EPQ. NY. New York. Charter 13027. Claremont National Bank of New York. F-609. Plain Back. Strong color blends well with bright original paper. #244734 \$650.00
1902. \$5. PMG. VF-30. IN. Tell City. Charter 7375. Citizens National Bank. F-598. Plain Back. Strong pen signatures. #236124 \$575.00
1929. \$10. PMG. AU-55. EPQ. NY. Silver Creek. Charter 10258. Silver Creek National Bank Silver Creek, New York. F-1801-1. Type-1. Vivid ink rests upon brilliant white paper. Nearly new and very eye appealing. #240513 \$399.00
1929. \$10. PMG. Ch AU-58. EPQ. NJ. Carlstadt. Charter 5416. Carlstadt National Bank. F-1801-1. Type-1. A nearly new note with great eye appeal. #242575 \$475.00
1929. \$10. PMG. Ch VF-35. SC. Marion. Charter 10085. Marion National Bank. F-1801-1. Type-1. Nice embossing and solid for the grade. #243002 \$395.00
1929. \$10. PMG. VF-25. NJ. Ocean City. Charter 6060. First National Bank of Ocean City. F-1801-1. Type-1. Well centered with traces of nice embossing still showing. #243023 \$425.00
1929. \$10. PMG. VF-30. MA. Ipswich. Charter 4774. First Nat'l Bank of Ipswich. F-1801-1. Type-1. A scarce note with strong ink and a solid look. #240098 \$895.00
1929. \$10. PMG. VF-30. PA. Summerville. Charter 6739. Union National Bank of

Summerville. F-1801-1. Well centered and solid for the grade. #244955 \$395.00



1929. \$10. PMG. VF-30. MD. Bel Air. Charter 13680. First Nat'l Bank of Bel Air. F-1801-2. Type-2. Opened in 1933 and a small only issuer. Well centered with light even wear. #244754 \$1095.00
1929. \$20. PCGS. VF-30. IL. Chicago. Charter 14245. Milwaukee Avenue National Bank of Chicago. F-1802-2. Type-2. A note with strong ink, strong registry and a bright appearance. #240290 \$375.00
1929. \$20. PMG. VF-20. SC. Gaffney. Charter 10655. Merchants and Planters National Bank of Gaffney. F-1802-2. Solid for the grade. #243024 \$295.00
1929. \$20. PMG. VF-30. FL. Miami. Charter 13570. Florida National Bank and Trust Company at Miami. F-1802-1. Type-1. A popular town. This note is well centered and solid for the grade. #244888 \$495.00
1929. \$5. PMG. Ch AU-58. TX. Waxahachie. Charter 13516. Citizens National Bank in Waxahachie. F-1800-2. Type-2. A well centered note with strong color and bright paper. #245104 \$550.00
1929. \$5. PMG. Ch F-15. NY. Livonia. Charter 13006. Stewart National Bank of Livonia. F-1800-1. Type-1. A scarce note with strong color for the grade and solid paper. #240471 \$450.00
1929. \$5. PMG. Unc-62. TX. Waxahachie. Charter 13516. Citizens National Bank in Waxahachie. F-1800-2. Type-2. A bright note with strong color and well embossed. Much nicer than the grade suggests. #245079 \$625.00



1929. \$5. PMG. VF-20. MI. Blissfield. Charter 11813. First National Bank of Blissfield. F-1800-1. T-1. A tougher Lenawee County issue with 18 large and only 7 small known according to Track & Price. Well centered with a little 'crisp' still apparent. #243144 \$895.00
1929. \$5. PMG. VF-20. OK. Helena. Charter 12081. Helena National Bank. F-1800-1.

Type-1. A scarce small only Alfalfa County bank with just 10 notes in the census.

A well centered example with even wear.
..... #242809 \$595.00

1929. \$50. PCGS. XF-40. IA. Winterset. Charter 2002. Citizens National Bank of Winterset. F-1803-1. Type-1. Well centered with strong color and bright paper.
..... #247174 \$695.00

1929. \$50. PMG. Ch F-15. ID. Boise. Charter 1668. First National Bank of Idaho. F-1803-1. Type-1. Well centered and solid for the grade. #245019 \$495.00

1929. \$50. PMG. VF-30. EPQ. IA. Winterset. Charter 2002. Citizens National Bank of Winterset. F-1803-1. Type-1. Well centered with premium paper and problem free.
..... #242732 \$650.00

Fractional Currency

10¢. 5th Issue. PMG. Ch Unc-64. EPQ. F-1264. Green Seal. A pleasing note with strong color and bright premium paper.
..... #244883 \$310.00

25¢. 3rd Issue. PMG. Ch Unc-64. EPQ. F-1294SP. Wide Margins Specimen. Green Back. Hints of guide line can still be seen on a lovely specimen note that exhibits vivid color and bright premium paper.
..... #247141 \$299.00

50¢. 2nd Issue. PMG. Ch AU-58. F-1320. Surcharge "1863" and "0-1". Fiber Paper. A scarce variety with nice bronzing.
..... #247107 \$325.00

50¢. 4th Issue. PMG. Ch Unc-63. F-1379. Fully margined with a bright look and a pleasing appearance. #250050 \$259.00



50¢. 4th Issue. PMG. Ch Unc-64. EPQ. F-1374. Portrait of Lincoln. A popular and desirable note that appears to be quite nice with premium paper, strong color, and is well margined. #241840 \$1250.00

Obsolete Currency

1837. \$2. PMG. F-12. MD. Hagerstown. Washington County Savings Institution. Counterfeit. Comment: Minor Repair. Light repair near the upper right corner is minor.
..... #248459 \$495.00

1839-41. \$10. PMG. VF-20. TX. Cut Cancelled. Republic of Texas. An attractive example with strong color and solid paper. A typical cut cancel can be easily overlooked.
..... #244715 \$599.00

1840. 25¢. PMG. Ch F-15. MD. Baltimore. Howard Park Steam Cotton Factory.

Comment: Rust Minor Repairs. R-6. Vignettes include a Bust 25¢ reverse design. Rust spots sprinkle into even wear. Repairs are of little distraction. #248429 \$395.00

1840's. 6 1/4¢. PMG. Ch F-15. MD. Citizens Saving Institution. Baltimore. R-7. Lithography. Stated but unconfirmed to be located in Fell's Point. #248338 \$375.00

1841. 12 1/2¢. PMG. Ch VF-35. EPQ. MD. Warfieldsburg. Carroll County. R. Nelson. Remainder, R-7. R. Nelson was the owner of a general store and the local agent for Stainburn's Vegetable Extract Anti-Bilious Pills Well centered with only light folding and premium paper. #248425 \$475.00

1841. 25¢. PMG. Ch XF-45. MD. Port Deposit. Andrew Kidd. Remainder. Comment: Signature Added, Previously Mounted. R-7. M. Morris signed. #248342 \$249.00

185_. \$1. PCGS. Very Ch-64. PPQ. DC. Columbia Bank. Washington, DC. Mounted on Cardstock. Hole Punch Cancelled.

From one of the many fraudulent banks in business in DC from 1852-56. Vignettes include Hebe offering a drink to an eagle, an eagle perched on a federal shield, and Ceres kneeling in a field. The appearance is bright and fresh. Typical POC's lie across the signature lines. #248411 \$489.00

1850-60's. \$5. PMG. VF-25. FL. Bank of St. Johns. A cotton plant is the central vignette. Attractive red and black ink with solid paper. #249746 \$329.00

1850's-60's. \$1. PMG. Ch Unc-63. EPQ. MI. Remainder. State Bank of Michigan. Beautiful red and black inks. A central vignette displays elk, an eagle, and a shield.
..... #249805 \$315.00

1860's. \$5. PCGS. Gem-66. PPQ. RI. Providence, Rhode Island. Bank of America. Remainder. #244542 \$169.00

1872. \$500. PMG. VF-30. MD. Sadler's Business College. Baltimore. An attractive note with vignettes of Commerce on the left and the Virginia coat of arms on the right. Green and black inks blend well onto paper with light even wear. . #248383 \$325.00

Colonial Currency

1/1/1776. DE. Ten Shillings. PMG. Ch AU-58. EPQ. DE-79. A premium note with solid color and fresh paper. #249999 \$425.00

1/14/1779. CC. Sixty Dollars. PMG. XF-40. CC-99. Solid for the grade with strong signatures and a pleasing appearance.
..... #249974 \$559.00

3/16/1785. PA. Fifteen Shillings. PMG. VF-25. PA-271. A pleasing note that exhibits strong ink, solid paper, and 3 nice signatures.
..... #237231 \$425.00

Confederate Currency

1861. \$20. PCGS. Ch AU-58. T-18. Well inked and a bright appearance. . . . #250051 \$275.00

1862. \$100. PMG. AU-55. T-40. Locomotive with diffused steam. An attractive note that exhibits pleasing paper, nice color, and 3 interest payments stamped on the back.
..... #248616 \$249.00

1862. \$100. PMG. Ch AU-58. EPQ. T-41. A central vignette features slaves hoeing cotton. Color and signatures are both pleasing and the paper is premium.
..... #217287 \$269.00

1862. \$100. PMG. Ch Unc-64. EPQ. T-41. Slaves hoeing cotton vignette. A pleasing original note with 4 full margins and 3 stamped interest payments. . #241641 \$395.00

Error Notes

1957-B. \$1. PCGS. Superb-68. PPQ. Silver Certificate. A gem note and scarce Mismatched Serial Number Error.
..... #217369 \$950.00

1976. \$2. PCGS. AU-50. Federal Reserve Note. Overprint Misalignment Error. A shift downward of the 3rd printing stage. Scarce on a \$2 note. #249846 \$310.00

1977. \$20. PCGS. Very Ch-64. PPQ. Federal Reserve Note. Missing Back Printing Error. Chicago District. The entire first printing is missing. #244907 \$550.00

1981. \$1. PMG. Ch AU-58. Federal Reserve Note. Offset Printing Error. Back to Front. Mule. A fantastic full back to front error with bold ink on both impressions.
..... #249828 \$395.00

1988. \$1. PMG. Gem-66. EPQ. Federal Reserve Note. Inverted Overprint Error. San Francisco District. Type II. The entire third print is upside down. . . . #250031 \$715.00

1988. \$100. PCGS. Ch AU-55. Federal Reserve Note. Missing Overprint. The entire third print is missing. #249692 \$649.00

1995. \$20. PMG. Gem-66. EPQ. Federal Reserve Note. Missing Print Error. First Print Missing. The entire first print is missing from the back. Great centering on the front and super fresh. #242719 \$650.00



1995. \$5. PMG. Gem-66. EPQ. Federal Reserve Note. Overprint on back error. Richmond District. The third printing has been printed on the back. The look is very eye appealing. #249978 \$849.00

Highlights from our One-of-a-Kind Selections of Large Size Notes



**1882 \$500
Gold Certificate**
PCGS. VF-25
— PPQ • F-1216b —

A striking portrait of Abraham Lincoln rests upon premium paper that still retains its originality and quite a bit of its brightness. Wear is light, gentle, and well in line for the grade. The black color is still rich, the red seal is still strong, the blue serial numbers still offer pizzazz, and the orange ink on both sides remains fresh and unoxidized. Margins are well framed and more than ample. As with all varieties in this issue, this example is very elusive with only 55 known in all grades, many of which would only rate as 'details' pieces. This premium example would be the highlight of many significant collections.

Only \$39,995.00 #247232



**1901 \$10
Legal Tender
Note**

PMG. VF-25 • F-121m

Mule. John Burke Back Plate #337. Ample margins surround strong color and even wear.

Only \$1,995.00 #247033



**1899 \$1
Silver Certificate**
PMG. Gem-66
— EPQ • F-226a —

An early in the run 'Black Eagle' with beautiful black and green ink and brilliant white paper. Well embossed blue serial numbers and seal complete a great look!

Only \$1,950.00 #249991



**1891 \$2
Silver
Certificate**

PMG. Ch AU-58 • EPQ • F-245

Portrait of William Windom. A beautiful note that exhibits strong color and bright premium paper. Margins are wide and eye appeal is excellent.

Only \$5,450.00 #247029



**1891 \$2
Silver Certificate**
PMG. VF-25
— EPQ • F-245 —

Well centered wide margins frame wonderful color. The premium paper offers plenty of eye appeal.

Only \$1,695.00 #248579



**1917 \$1
Legal Tender
Note**

PCGS. Gem-66 • PPQ • F-39

A note with strong ink and bright original paper. Plenty of eye appeal.

Only \$1,295.00 #246970



**1862 \$1
Legal Tender Note**
PCGS. Ch AU-55
— F-16c —

A beautiful 'Chase' that exhibits full well centered borders and sharp corners. Black, green, and red inks are all vivid and the paper is bright. Great eye appeal!

Only \$2,499.00 #220328



**1918 \$2
Federal Reserve
Bank Note**

PMG. XF-40 • F-758

Cleveland District. A scarcer 'Battleship' with strong ink and bright paper. Track and Price lists only 98 known in all grades.

Only \$1,450.00 #249849